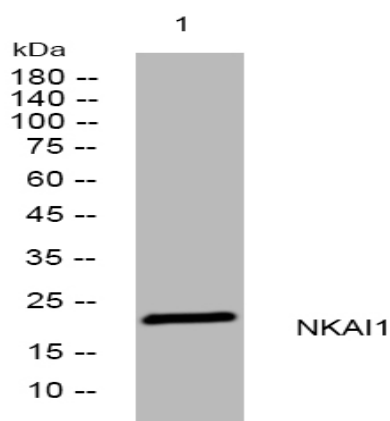


NKAI1 rabbit pAb

Catalog No :	YT6642
Reactivity :	Human;Mouse
Applications :	WB
Target :	NKAI1
Gene Name :	NKAIN1 FAM77C
Protein Name :	NKAI1
Human Gene Id :	79570
Human Swiss Prot No :	Q4KMZ8
Mouse Gene Id :	67149
Mouse Swiss Prot No :	Q9D035
Immunogen :	Synthesized peptide derived from human NKAI1 AA range: 124-174
Specificity :	This antibody detects endogenous levels of NKAI1 at Human/Mouse
Formulation :	Liquid in PBS containing 50% glycerol, 0.5% BSA and 0.02% sodium azide.
Source :	Polyclonal, Rabbit,IgG
Dilution :	WB 1:500-2000
Purification :	The antibody was affinity-purified from rabbit antiserum by affinity-chromatography using epitope-specific immunogen.
Concentration :	1 mg/ml
Storage Stability :	-15°C to -25°C/1 year(Do not lower than -25°C)

Molecularweight : 23kD**Background :** NKAIN1 is a member of a family of mammalian proteins with similarity to Drosophila Nkain and interacts with the beta subunit of Na,K-ATPase (ATP1B1; MIM 182330) (Gorokhova et al., 2007 [PubMed 17606467]).[supplied by OMIM, Jun 2009],**Function :** similarity:Belongs to the NKAIN family.,subunit:Interacts with ATP1B1 C-terminus.,**Subcellular Location :** Cell membrane ; Multi-pass membrane protein .**Sort :** 10863**No4 :** 1**Host :** Rabbit**Modifications :** Unmodified

Products Images



Western blot analysis of lysates from Jurkat cells, primary antibody was diluted at 1:1000, 4° over night