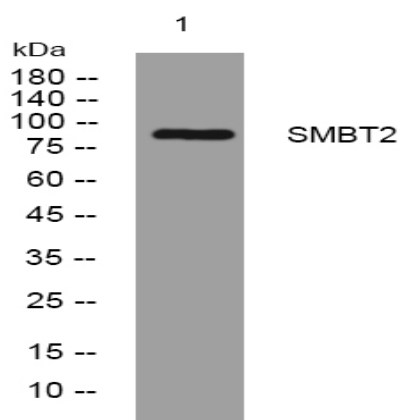


## SMBT2 rabbit pAb

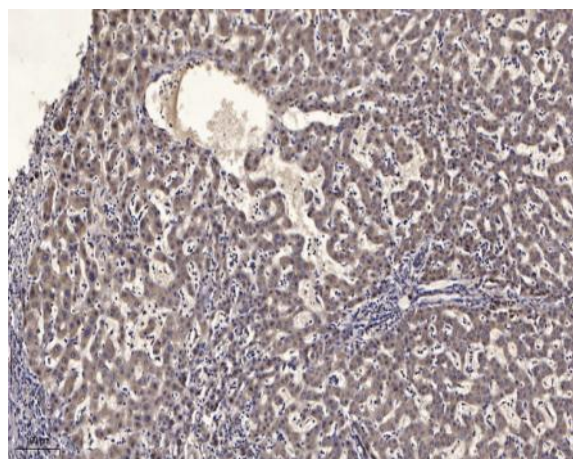
<b>Catalog No :</b>	YT6640
<b>Reactivity :</b>	Human;Mouse
<b>Applications :</b>	WB;IHC
<b>Target :</b>	SMBT2
<b>Gene Name :</b>	SFMBT2 KIAA1617
<b>Protein Name :</b>	SMBT2
<b>Human Gene Id :</b>	57713
<b>Human Swiss Prot No :</b>	Q5VUG0
<b>Mouse Swiss Prot No :</b>	Q5DTW2
<b>Immunogen :</b>	Synthesized peptide derived from human SMBT2 AA range: 156-206
<b>Specificity :</b>	This antibody detects endogenous levels of SMBT2 at Human/Mouse
<b>Formulation :</b>	Liquid in PBS containing 50% glycerol, 0.5% BSA and 0.02% sodium azide.
<b>Source :</b>	Polyclonal, Rabbit,IgG
<b>Dilution :</b>	WB 1:500-2000;IHC 1:50-300
<b>Purification :</b>	The antibody was affinity-purified from rabbit antiserum by affinity-chromatography using epitope-specific immunogen.
<b>Concentration :</b>	1 mg/ml
<b>Storage Stability :</b>	-15°C to -25°C/1 year(Do not lower than -25°C)
<b>Molecularweight :</b>	98kD

<b>Function :</b>	similarity:Contains 1 SAM (sterile alpha motif) domain.,similarity:Contains 4 MBT repeats.,
<b>Subcellular Location :</b>	Nucleus .
<b>Sort :</b>	16433
<b>No4 :</b>	1
<b>Host :</b>	Rabbit
<b>Modifications :</b>	Unmodified

## Products Images



Western blot analysis of lysates from HpeG2 cells, primary antibody was diluted at 1:1000, 4° over night



Immunohistochemical analysis of paraffin-embedded human liver cancer. 1, Antibody was diluted at 1:200(4° overnight). 2, Tris-EDTA,pH9.0 was used for antigen retrieval. 3,Secondary antibody was diluted at 1:200(room temperature, 45min).