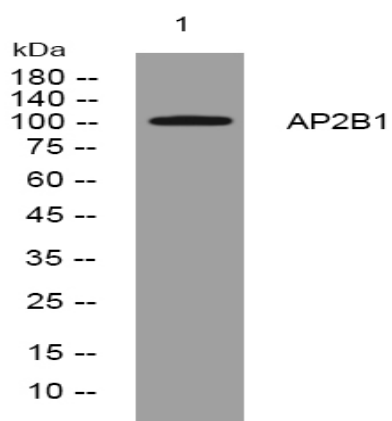


AP2B1 rabbit pAb

Catalog No :	YT6636
Reactivity :	Human;Mouse;Rat
Applications :	WB
Target :	AP2B1
Fields :	>>Endocytosis;>>Synaptic vesicle cycle;>>Endocrine and other factor-regulated calcium reabsorption;>>Huntington disease
Gene Name :	AP2B1 ADTB2 CLAPB1
Protein Name :	AP2B1
Human Gene Id :	163
Human Swiss Prot No :	P63010
Mouse Gene Id :	71770
Mouse Swiss Prot No :	Q9DBG3
Rat Gene Id :	100912146
Rat Swiss Prot No :	P62944
Immunogen :	Synthesized peptide derived from human AP2B1 AA range: 70-120
Specificity :	This antibody detects endogenous levels of AP2B1 at Human/Mouse/Rat
Formulation :	Liquid in PBS containing 50% glycerol, 0.5% BSA and 0.02% sodium azide.
Source :	Polyclonal, Rabbit,IgG
Dilution :	WB 1:500-2000

Purification :	The antibody was affinity-purified from rabbit antiserum by affinity-chromatography using epitope-specific immunogen.
Concentration :	1 mg/ml
Storage Stability :	-15°C to -25°C/1 year(Do not lower than -25°C)
Molecularweight :	103kD
Background :	The protein encoded by this gene is one of two large chain components of the assembly protein complex 2, which serves to link clathrin to receptors in coated vesicles. The encoded protein is found on the cytoplasmic face of coated vesicles in the plasma membrane. Two transcript variants encoding different isoforms have been found for this gene. [provided by RefSeq, Jul 2008],
Function :	function:Component of the adaptor complexes which link clathrin to receptors in coated vesicles. Clathrin-associated protein complexes are believed to interact with the cytoplasmic tails of membrane proteins, leading to their selection and concentration. AP2B1 is a subunit of the plasma membrane adaptor. The complex binds polyphosphoinositides.,similarity:Belongs to the adaptor complexes large subunit family.,subcellular location:Component of the coat surrounding the cytoplasmic face of coated vesicles in the plasma membrane.,subunit:Adaptor protein complex 2 (AP-2) is a heterotetramer composed of two large adaptins (alpha-type subunit AP2A1 or AP2A2 and beta-type subunit AP2B1), a medium adaptin (mu-type subunit AP2M1) and a small adaptin (sigma-type subunit AP2S1). Binds EPN1, EPS15, SNAP91 and clathrin.,
Subcellular Location :	Cell membrane . Membrane, coated pit ; Peripheral membrane protein ; Cytoplasmic side . AP-2 appears to be excluded from internalizing CCVs and to disengage from sites of endocytosis seconds before internalization of the nascent CCV.
Expression :	Expressed in the brain (at protein level).
Sort :	2101
No4 :	1
Host :	Rabbit
Modifications :	Unmodified

Products Images



Western blot analysis of lysates from HpeG2 cells, primary antibody was diluted at 1:1000, 4° over night