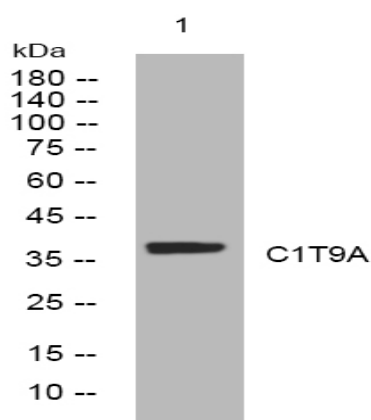


C1T9A rabbit pAb

Catalog No :	YT6634
Reactivity :	Human;Mouse
Applications :	WB
Target :	C1T9A
Gene Name :	C1QTNF9 C1QTNF9A UNQ6503/PRO21380
Protein Name :	C1T9A
Human Gene Id :	338872
Human Swiss Prot No :	P0C862
Immunogen :	Synthesized peptide derived from human C1T9A AA range: 28-78
Specificity :	This antibody detects endogenous levels of C1T9A at Human
Formulation :	Liquid in PBS containing 50% glycerol, 0.5% BSA and 0.02% sodium azide.
Source :	Polyclonal, Rabbit,IgG
Dilution :	WB 1[?]500-2000
Purification :	The antibody was affinity-purified from rabbit antiserum by affinity-chromatography using epitope-specific immunogen.
Concentration :	1 mg/ml
Storage Stability :	-15°C to -25°C/1 year(Do not lower than -25°C)
Molecularweight :	37kD
Function :	similarity:Contains 1 C1q domain.,similarity:Contains 3 collagen-like domains.,

Subcellular Location :	Secreted .
Expression :	Expressed predominantly in adipose tissue.
Sort :	2943
No4 :	1
Host :	Rabbit
Modifications :	Unmodified

Products Images



Western blot analysis of lysates from Jurkat cells, primary antibody was diluted at 1:1000, 4° over night