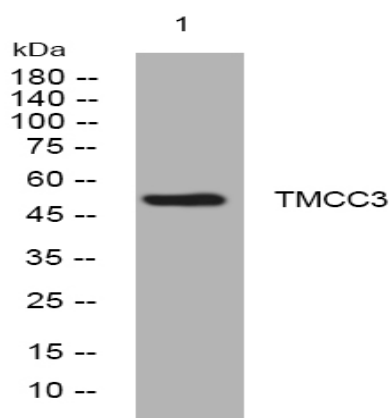


TMCC3 rabbit pAb

| | |
|------------------------------|---|
| Catalog No : | YT6629 |
| Reactivity : | Human;Mouse |
| Applications : | WB |
| Target : | TMCC3 |
| Gene Name : | TMCC3 KIAA1145 |
| Protein Name : | TMCC3 |
| Human Gene Id : | 57458 |
| Human Swiss Prot No : | Q9ULS5 |
| Mouse Gene Id : | 319880 |
| Mouse Swiss Prot No : | Q8R310 |
| Immunogen : | Synthesized peptide derived from human TMCC3 AA range: 33-83 |
| Specificity : | This antibody detects endogenous levels of TMCC3 at Human/Mouse |
| Formulation : | Liquid in PBS containing 50% glycerol, 0.5% BSA and 0.02% sodium azide. |
| Source : | Polyclonal, Rabbit,IgG |
| Dilution : | WB 1:500-2000 |
| Purification : | The antibody was affinity-purified from rabbit antiserum by affinity-chromatography using epitope-specific immunogen. |
| Concentration : | 1 mg/ml |
| Storage Stability : | -15°C to -25°C/1 year(Do not lower than -25°C) |

| | |
|-------------------------------|---|
| Molecularweight : | 52kD |
| Function : | similarity:Belongs to the TEX28 family., |
| Subcellular Location : | Endoplasmic reticulum membrane ; Multi-pass membrane protein . Concentrates in discrete patches along peripheral endoplasmic reticulum tubules. . |
| Expression : | Widely expressed, with highest levels in brain, spinal cord and testis. |
| Sort : | 17229 |
| No4 : | 1 |
| Host : | Rabbit |
| Modifications : | Unmodified |

Products Images



Western blot analysis of lysates from THP-1 cells, primary antibody was diluted at 1:1000, 4° over night