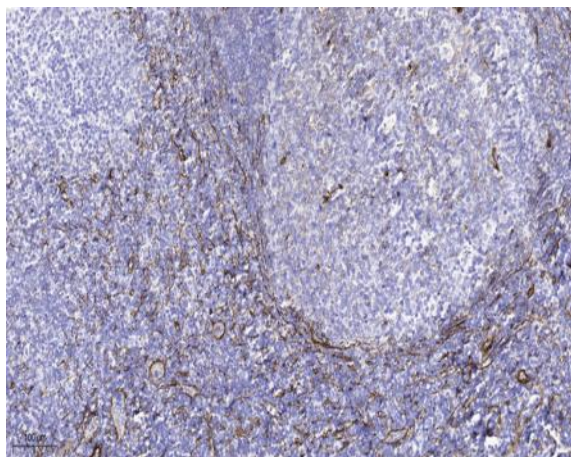


PCOTH rabbit pAb

Catalog No :	YT6628
Reactivity :	Human
Applications :	IHC;IF
Target :	PCOTH
Gene Name :	PCOTH
Protein Name :	PCOTH
Human Gene Id :	542767
Human Swiss Prot No :	Q58A44
Immunogen :	Synthesized peptide derived from human PCOTH AA range: 14-64
Specificity :	This antibody detects endogenous levels of PCOTH at Human
Formulation :	Liquid in PBS containing 50% glycerol, 0.5% BSA and 0.02% sodium azide.
Source :	Polyclonal, Rabbit,IgG
Dilution :	IHC 1:50-200. IF 1:50-200
Purification :	The antibody was affinity-purified from rabbit antiserum by affinity-chromatography using epitope-specific immunogen.
Concentration :	1 mg/ml
Storage Stability :	-15°C to -25°C/1 year(Do not lower than -25°C)
Molecularweight :	12kD
Function :	function:May be involved in growth and survival of prostate cancer cells through the TAF-1beta pathway.,tissue specificity:Expressed in prostate and testis. Weakly or not expressed in other tissues. Overexpressed in prostate cancers.,

Subcellular Location :	Cytoplasm .
Expression :	Expressed in prostate and testis. Weakly or not expressed in other tissues. Overexpressed in prostate cancers.
Sort :	11710
No4 :	1
Host :	Rabbit
Modifications :	Unmodified

Products Images



Immunohistochemical analysis of paraffin-embedded human tonsil. 1, Tris-EDTA,pH9.0 was used for antigen retrieval. 2 Antibody was diluted at 1:200(4° overnight.3,Secondary antibody was diluted at 1:200(room temperature, 45min).