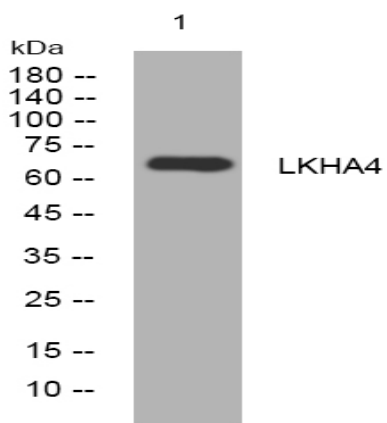


LKHA4 rabbit pAb

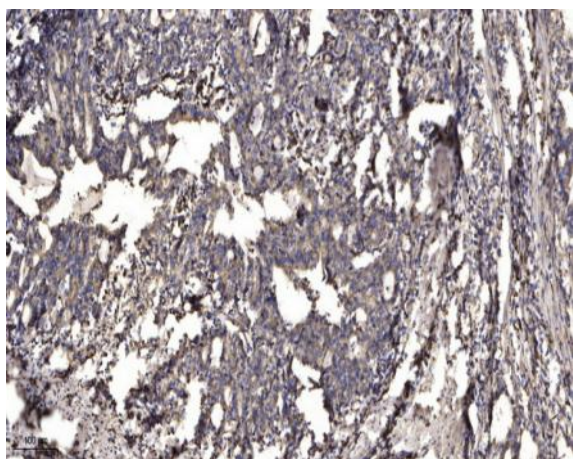
Catalog No :	YT6624
Reactivity :	Human;Mouse;Rat
Applications :	WB;IHC
Target :	LKHA4
Fields :	>>Arachidonic acid metabolism;>>Metabolic pathways
Gene Name :	LTA4H LTA4
Protein Name :	LKHA4
Human Gene Id :	4048
Human Swiss Prot No :	P09960
Mouse Gene Id :	16993
Mouse Swiss Prot No :	P24527
Rat Swiss Prot No :	P30349
Immunogen :	Synthesized peptide derived from human LKHA4 AA range: 68-118
Specificity :	This antibody detects endogenous levels of LKHA4 at Human/Mouse/Rat
Formulation :	Liquid in PBS containing 50% glycerol, 0.5% BSA and 0.02% sodium azide.
Source :	Polyclonal, Rabbit,IgG
Dilution :	WB 1:500-2000;IHC 1:50-300
Purification :	The antibody was affinity-purified from rabbit antiserum by affinity-chromatography using epitope-specific immunogen.

Concentration :	1 mg/ml
Storage Stability :	-15°C to -25°C/1 year(Do not lower than -25°C)
Molecularweight :	67kD
Background :	<p>The protein encoded by this gene is an enzyme that contains both hydrolase and aminopeptidase activities. The hydrolase activity is used in the final step of the biosynthesis of leukotriene B4, a proinflammatory mediator. The aminopeptidase activity has been shown to degrade proline-glycine-proline (PGP), a neutrophil chemoattractant and biomarker for chronic obstructive pulmonary disease (COPD). Several transcript variants encoding different isoforms have been found for this gene. [provided by RefSeq, Sep 2015],</p>
Function :	<p>catalytic activity:(7E,9E,11Z,14Z)-(5S,6S)-5,6-epoxyicosa-7,9,11,14-tetraenoate + H(2)O = (6Z,8E,10E,14Z)-(5S,12R)-5,12-dihydroxyicosa-6,8,10,14-tetraenoate.,cofactor: Binds 1 zinc ion per subunit.,function:Hydrolyzes an epoxide moiety of leukotriene A4 (LTA-4) to form leukotriene B4 (LTB-4). The enzyme also has some peptidase activity.,pathway:Lipid metabolism; leukotriene B4 biosynthesis.,similarity:Belongs to the peptidase M1 family.,subunit:Monomer.,</p>
Subcellular Location :	Cytoplasm .
Expression :	Isoform 1 and isoform 2 are expressed in monocytes, lymphocytes, neutrophils, reticulocytes, platelets and fibroblasts.
Sort :	9210
No4 :	1
Host :	Rabbit
Modifications :	Unmodified

Products Images



Western blot analysis of lysates from KB cells, primary antibody was diluted at 1:1000, 4° over night



Immunohistochemical analysis of paraffin-embedded human Gastric adenocarcinoma. 1, Antibody was diluted at 1:200(4° overnight). 2, Tris-EDTA,pH9.0 was used for antigen retrieval. 3,Secondary antibody was diluted at 1:200(room temperature, 45min).