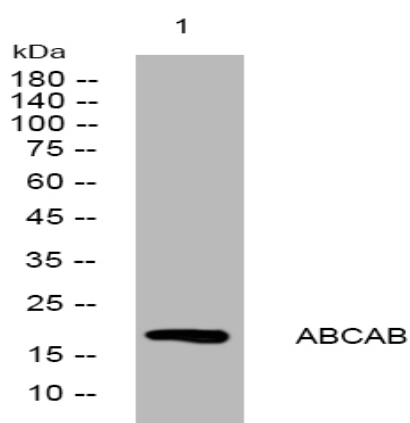


ABCAB rabbit pAb

Catalog No :	YT6619
Reactivity :	Human;Rat;Mouse;
Applications :	WB
Target :	ABCAB
Gene Name :	ABCA11P ABCA11
Protein Name :	ABCAB
Human Swiss Prot No :	Q4W5N1
Immunogen :	Synthesized peptide derived from human ABCAB AA range: 45-95
Specificity :	This antibody detects endogenous levels of ABCAB at Human
Formulation :	Liquid in PBS containing 50% glycerol, 0.5% BSA and 0.02% sodium azide.
Source :	Polyclonal, Rabbit,IgG
Dilution :	WB 1[?]500-2000
Purification :	The antibody was affinity-purified from rabbit antiserum by affinity-chromatography using epitope-specific immunogen.
Concentration :	1 mg/ml
Storage Stability :	-15°C to -25°C/1 year(Do not lower than -25°C)
Molecularweight :	17kD
Function :	caution:In contrast to other members of the family, it is much shorter and lacks ABC transporter domains. Defined as a pseudogene by HGNC. However, proteomic data on a specific peptide from PubMed:17924679 suggest the existence of this protein.,similarity:Belongs to the ABC transporter family. ABCA subfamily.,

Subcellular Location :	<u>integral component of membrane,</u>
Sort :	<u>1574</u>
No4 :	<u>1</u>
Host :	<u>Rabbit</u>
Modifications :	<u>Unmodified</u>

Products Images



Western blot analysis of lysates from U2OS cells, primary antibody was diluted at 1:1000, 4° over night