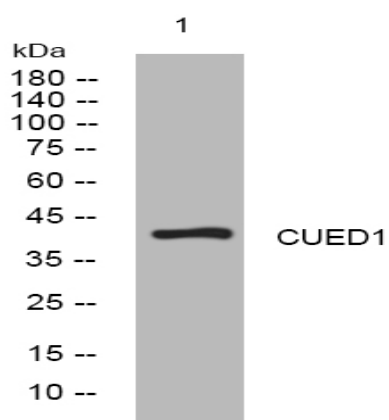


CUED1 rabbit pAb

Catalog No :	YT6618
Reactivity :	Human;Mouse
Applications :	WB
Target :	CUED1
Gene Name :	CUEDC1
Protein Name :	CUED1
Human Gene Id :	404093
Human Swiss Prot No :	Q9NWM3
Mouse Gene Id :	103841
Mouse Swiss Prot No :	Q8R3V6
Immunogen :	Synthesized peptide derived from human CUED1 AA range: 1-51
Specificity :	This antibody detects endogenous levels of CUED1 at Human/Mouse
Formulation :	Liquid in PBS containing 50% glycerol, 0.5% BSA and 0.02% sodium azide.
Source :	Polyclonal, Rabbit,IgG
Dilution :	WB 1:500-2000
Purification :	The antibody was affinity-purified from rabbit antiserum by affinity-chromatography using epitope-specific immunogen.
Concentration :	1 mg/ml
Storage Stability :	-15°C to -25°C/1 year(Do not lower than -25°C)

Molecularweight :	42kD
Function :	similarity:Contains 1 CUE domain.,
Sort :	4674
No4 :	1
Host :	Rabbit
Modifications :	Unmodified

Products Images



Western blot analysis of lysates from KB cells, primary antibody was diluted at 1:1000, 4 ° over night