

NAT10 rabbit pAb

Catalog No :	YT6611
Reactivity :	Human;Mouse
Applications :	WB;IHC
Target :	NAT10
Fields :	>>Ribosome biogenesis in eukaryotes
Gene Name :	NAT10 ALP KIAA1709
Protein Name :	NAT10
Human Gene Id :	55226
Human Swiss Prot No :	Q9H0A0
Mouse Gene Id :	98956
Mouse Swiss Prot No :	Q8K224
Immunogen :	Synthesized peptide derived from human NAT10 AA range: 738-788
Specificity :	This antibody detects endogenous levels of NAT10 at Human/Mouse
Formulation :	Liquid in PBS containing 50% glycerol, 0.5% BSA and 0.02% sodium azide.
Source :	Polyclonal, Rabbit,IgG
Dilution :	WB 1:500-2000;IHC 1:50-300
Purification :	The antibody was affinity-purified from rabbit antiserum by affinity-chromatography using epitope-specific immunogen.
Concentration :	1 mg/ml

Storage Stability : -15°C to -25°C/1 year(Do not lower than -25°C)

Molecularweight : 113kD

Background : The protein encoded by this gene is an RNA cytidine acetyltransferase involved in histone acetylation, tRNA acetylation, the biosynthesis of 18S rRNA, and the enhancement of nuclear architecture and chromatin organization. [provided by RefSeq, Oct 2016],

Function : function:Has a histone acetyltransferase in vitro. Involved in TERT transactivation.,similarity:Belongs to the UPF0202 family.,similarity:Contains 1 N-acetyltransferase domain.,

Subcellular Location : Nucleus, nucleolus . Midbody . Nucleolar in interphase and redistributes to the perichromosomal layer and to the midbody during telophase. .

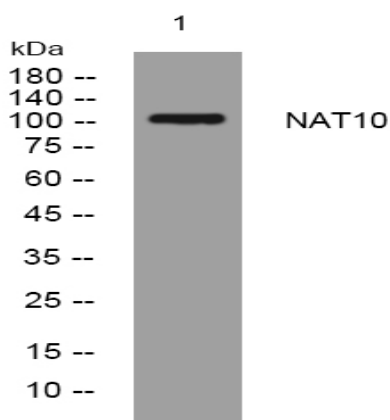
Sort : 10580

No4 : 1

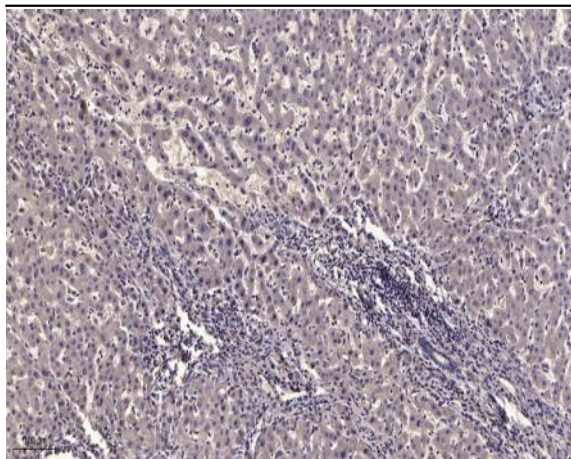
Host : Rabbit

Modifications : Unmodified

Products Images



Western blot analysis of lysates from THP-1 cells, primary antibody was diluted at 1:1000, 4° over night



Immunohistochemical analysis of paraffin-embedded human liver cancer. 1, Antibody was diluted at 1:200(4° overnight). 2, Tris-EDTA,pH9.0 was used for antigen retrieval. 3,Secondary antibody was diluted at 1:200(room temperature, 45min).