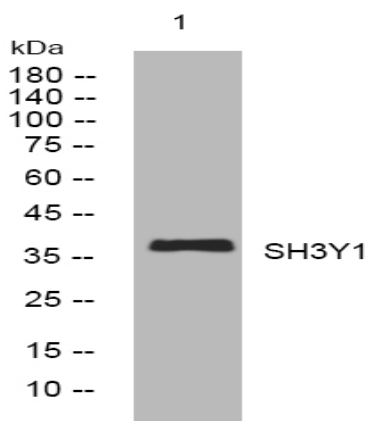


SH3Y1 rabbit pAb

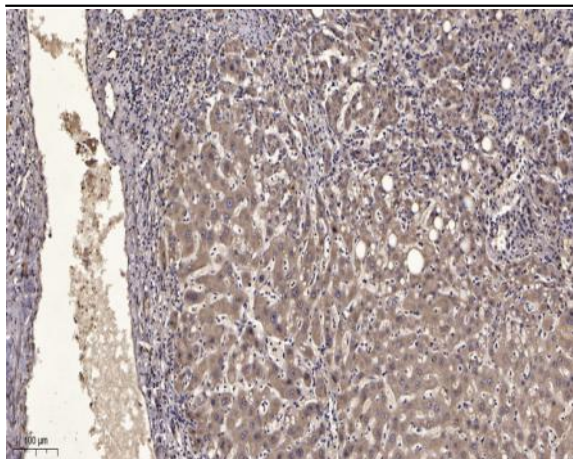
Catalog No :	YT6609
Reactivity :	Human;Mouse;Rat
Applications :	WB;ELISA;IHC
Target :	SH3Y1
Gene Name :	SH3YL1
Protein Name :	SH3Y1
Human Gene Id :	26751
Human Swiss Prot No :	Q96HL8
Mouse Gene Id :	24057
Mouse Swiss Prot No :	O08641
Rat Gene Id :	362724
Rat Swiss Prot No :	B0BNA1
Immunogen :	Synthesized peptide derived from human SH3Y1 AA range: 10-60
Specificity :	This antibody detects endogenous levels of SH3Y1 at Human/Mouse/Rat
Formulation :	Liquid in PBS containing 50% glycerol, 0.5% BSA and 0.02% sodium azide.
Source :	Polyclonal, Rabbit,IgG
Dilution :	WB 1:500-2000;IHC 1:50-300; ELISA 2000-20000
Purification :	The antibody was affinity-purified from rabbit antiserum by affinity-chromatography using epitope-specific immunogen.

Concentration :	1 mg/ml
Storage Stability :	-15°C to -25°C/1 year(Do not lower than -25°C)
Molecularweight :	38kD
Function :	similarity:Belongs to the SH3YL1 family.,similarity:Contains 1 SH3 domain.,subunit:Interacts with SH3D19.,
Subcellular Location :	ruffle membrane,
Sort :	16291
No4 :	1
Host :	Rabbit
Modifications :	Unmodified

Products Images



Western blot analysis of lysates from 293T cells, primary antibody was diluted at 1:1000, 4° over night



Immunohistochemical analysis of paraffin-embedded human liver cancer. 1, Antibody was diluted at 1:200(4° overnight). 2, Tris-EDTA,pH9.0 was used for antigen retrieval. 3,Secondary antibody was diluted at 1:200(room temperature, 45min).