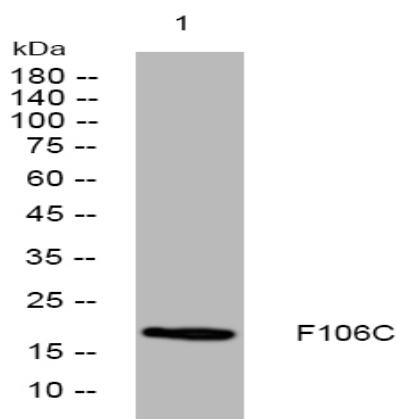


F106C rabbit pAb

Catalog No :	YT6608
Reactivity :	Human
Applications :	WB
Target :	F106C
Gene Name :	FAM106CP FAM106C
Protein Name :	F106C
Human Swiss Prot No :	P0CH98
Immunogen :	Synthesized peptide derived from human F106C AA range: 33-83
Specificity :	This antibody detects endogenous levels of F106C at Human
Formulation :	Liquid in PBS containing 50% glycerol, 0.5% BSA and 0.02% sodium azide.
Source :	Polyclonal, Rabbit,IgG
Dilution :	WB 1[?]500-2000
Purification :	The antibody was affinity-purified from rabbit antiserum by affinity-chromatography using epitope-specific immunogen.
Concentration :	1 mg/ml
Storage Stability :	-15°C to -25°C/1 year(Do not lower than -25°C)
Molecularweight :	19kD
Function :	similarity:Belongs to the FAM106 family.,
Sort :	5812

No4 :	<u>1</u>
Host :	<u>Rabbit</u>
Modifications :	<u>Unmodified</u>

Products Images



Western blot analysis of lysates from SH-SY5Y cells, primary antibody was diluted at 1:1000, 4° over night