

ASPC1 rabbit pAb

Catalog No :	YT6607
Reactivity :	Human;Mouse
Applications :	WB
Target :	ASPC1
Fields :	>>Transcriptional misregulation in cancer
Gene Name :	ASPSCR1 ASPL RCC17 TUG UBXD9 UBXN9
Protein Name :	ASPC1
Human Gene Id :	79058
Human Swiss Prot No :	Q9BZE9
Mouse Gene Id :	68938
Mouse Swiss Prot No :	Q8VBT9
Immunogen :	Synthesized peptide derived from human ASPC1 AA range: 327-377
Specificity :	This antibody detects endogenous levels of ASPC1 at Human/Mouse
Formulation :	Liquid in PBS containing 50% glycerol, 0.5% BSA and 0.02% sodium azide.
Source :	Polyclonal, Rabbit,IgG
Dilution :	WB 1[?]500-2000
Purification :	The antibody was affinity-purified from rabbit antiserum by affinity-chromatography using epitope-specific immunogen.
Concentration :	1 mg/ml

Storage Stability : -15°C to -25°C/1 year(Do not lower than -25°C)

Molecularweight : 61kD

Background : The protein encoded by this gene contains a UBX domain and interacts with glucose transporter type 4 (GLUT4). This protein is a tether, which sequesters the GLUT4 in intracellular vesicles in muscle and fat cells in the absence of insulin, and redistributes the GLUT4 to the plasma membrane within minutes of insulin stimulation. Translocation t(X;17)(p11;q25) of this gene with transcription factor TFE3 gene results in a ASPSCR1-TFE3 fusion protein in alveolar soft part sarcoma and in renal cell carcinomas. Multiple alternatively spliced transcript variants have been found. [provided by RefSeq, Oct 2011],

Function : disease:A chromosomal aberration involving ASPSCR1 may be a cause of papillary renal cell carcinoma (PRCC) [MIM:605074].,disease:Chromosomal aberrations involving ASPSCR1 are recurrent in alveolar soft part sarcoma (ASPS) [MIM:606243]. Translocation t(X;17)(p11;q25) with TFE3 forms a ASPSCR1-TFE3 fusion protein.,function:Tethering protein that sequesters GLUT4-containing vesicles in the cytoplasm in the absence of insulin. Modulates the amount of GLUT4 that is available at the cell surface.,similarity:Contains 1 UBX domain.,subunit:Interacts with GLUT4.,tissue specificity:Ubiquitous. Highly expressed in testis, heart, skeletal muscle and pancreas.,

Subcellular Location : Endomembrane system ; Peripheral membrane protein . Endoplasmic reticulum-Golgi intermediate compartment membrane ; Peripheral membrane protein. Cytoplasm . Nucleus .

Expression : Ubiquitous. Highly expressed in testis, heart, skeletal muscle and pancreas.

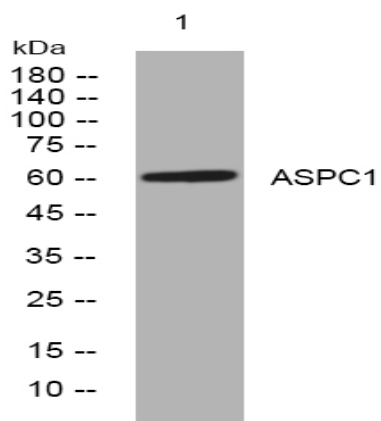
Sort : 2332

No4 : 1

Host : Rabbit

Modifications : Unmodified

Products Images



Western blot analysis of lysates from CACO2 cells, primary antibody was diluted at 1:1000, 4° over night