

OCC1 rabbit pAb

Catalog No :	YT6604
Reactivity :	Human;Mouse;Rat
Applications :	IHC;IF
Target :	OCC1
Gene Name :	OCC1 C12orf75
Protein Name :	OCC1
Human Gene Id :	387882
Human Swiss Prot No :	Q8TAD7
Mouse Gene Id :	69784
Mouse Swiss Prot No :	P0C913
Rat Swiss Prot No :	P0CD96
Immunogen :	Synthesized peptide derived from human OCC1 AA range: 6-56
Specificity :	This antibody detects endogenous levels of OCC1 at Human/Mouse/Rat
Formulation :	Liquid in PBS containing 50% glycerol, 0.5% BSA and 0.02% sodium azide.
Source :	Polyclonal, Rabbit,IgG
Dilution :	IHC 1[?]50-200. IF 1:50-200
Purification :	The antibody was affinity-purified from rabbit antiserum by affinity-chromatography using epitope-specific immunogen.
Concentration :	1 mg/ml

Storage Stability : -15°C to -25°C/1 year(Do not lower than -25°C)

Molecularweight : 7kD

Function : caution:Was reported (PubMed:11890990) to be transcribed but not translated.,sequence caution:Wrong choice of CDS.,similarity:Belongs to the OCC1 family.,tissue specificity:High expression in placenta, skeletal muscle, kidney and pancreas tissues. Absent or very faint expression in heart, brain, lung and liver.,

Expression : High expression in placenta, skeletal muscle, kidney and pancreas tissues. Absent or very faint expression in heart, brain, lung and liver. Expressed during adipogenic differentiation of mesenchymal stem cells (at protein level).

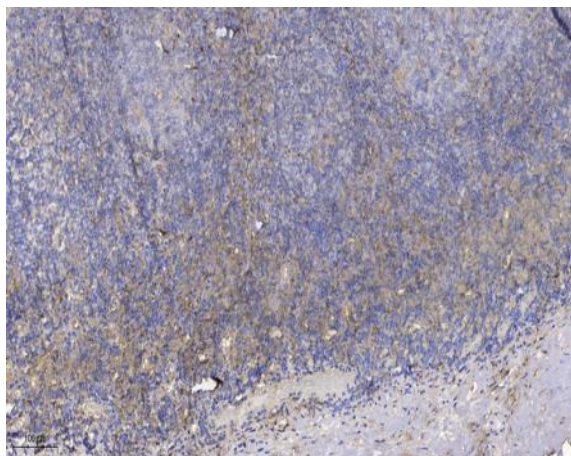
Sort : 11039

No4 : 1

Host : Rabbit

Modifications : Unmodified

Products Images



Immunohistochemical analysis of paraffin-embedded human tonsil. 1, Antibody was diluted at 1:200(4° overnight). 2, Tris-EDTA,pH9.0 was used for antigen retrieval. 3,Secondary antibody was diluted at 1:200(room temperature, 30min).