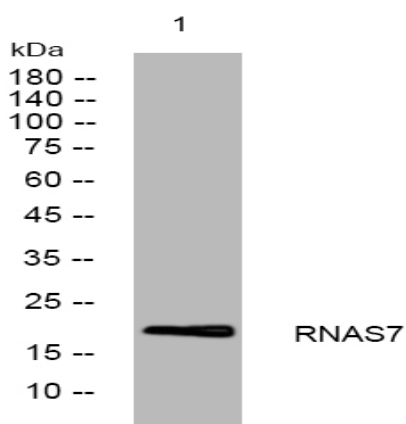


RNAS7 rabbit pAb

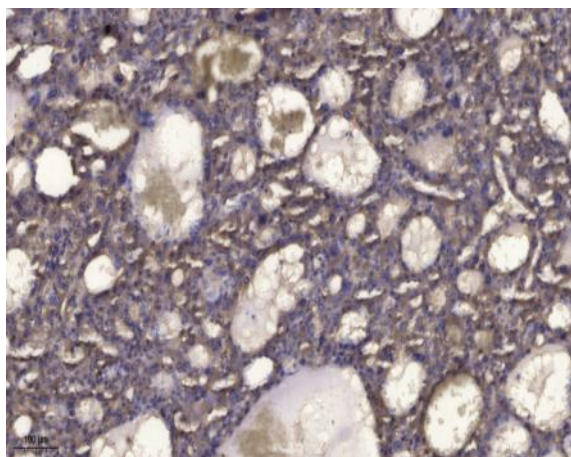
Catalog No :	YT6603
Reactivity :	Human
Applications :	WB;ELISA;IHC
Target :	RNAS7
Gene Name :	RNASE7 UNQ2516/PRO6006
Protein Name :	RNAS7
Human Gene Id :	84659
Human Swiss Prot No :	Q9H1E1
Immunogen :	Synthesized peptide derived from human RNAS7 AA range: 37-87
Specificity :	This antibody detects endogenous levels of RNAS7 at Human
Formulation :	Liquid in PBS containing 50% glycerol, 0.5% BSA and 0.02% sodium azide.
Source :	Polyclonal, Rabbit,IgG
Dilution :	WB 1:500-2000;IHC 1:50-300; ELISA 2000-20000
Purification :	The antibody was affinity-purified from rabbit antiserum by affinity-chromatography using epitope-specific immunogen.
Concentration :	1 mg/ml
Storage Stability :	-15°C to -25°C/1 year(Do not lower than -25°C)
Molecularweight :	17kD
Background :	The protein encoded by this gene belongs to the pancreatic ribonuclease family, a subset of the ribonuclease A superfamily. The protein has broad-spectrum antimicrobial activity against bacteria and fungi. [provided by RefSeq, Oct 2014],

Function :	function:Exhibits a potent RNase activity. Has broad-spectrum antimicrobial activity against many pathogenic microorganisms and remarkably potent activity (lethal dose of 90%)
Subcellular Location :	Secreted . Detected in urine . .
Expression :	Expressed in collecting ducts in kidney, and in apical uroepithelium in bladder (at protein level) (PubMed:25075772). Expressed in various epithelial tissues including skin, respiratory tract, genito-urinary tract and, at a low level, in the gut (PubMed:12244054). Expressed in liver, kidney, skeletal muscle and heart (PubMed:12527768).
Sort :	14551
No4 :	1
Host :	Rabbit
Modifications :	Unmodified

Products Images



Western blot analysis of lysates from HpeG2 cells, primary antibody was diluted at 1:1000, 4° over night



Immunohistochemical analysis of paraffin-embedded human liver cancer. 1, Antibody was diluted at 1:200(4° overnight). 2, Tris-EDTA,pH9.0 was used for antigen retrieval. 3,Secondary antibody was diluted at 1:200(room temperature, 45min).