

## FAIM3 rabbit pAb

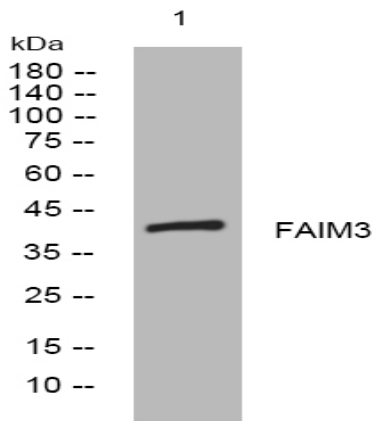
<b>Catalog No :</b>	YT6599
<b>Reactivity :</b>	Human;Mouse;Rat
<b>Applications :</b>	WB
<b>Target :</b>	FAIM3
<b>Gene Name :</b>	FAIM3 TOSO
<b>Protein Name :</b>	FAIM3
<b>Human Gene Id :</b>	9214
<b>Human Swiss Prot No :</b>	O60667
<b>Mouse Gene Id :</b>	69169
<b>Mouse Swiss Prot No :</b>	A1KXC4
<b>Rat Gene Id :</b>	548326
<b>Rat Swiss Prot No :</b>	Q5M871
<b>Immunogen :</b>	Synthesized peptide derived from human FAIM3 AA range: 123-173
<b>Specificity :</b>	This antibody detects endogenous levels of FAIM3 at Human/Mouse/Rat
<b>Formulation :</b>	Liquid in PBS containing 50% glycerol, 0.5% BSA and 0.02% sodium azide.
<b>Source :</b>	Polyclonal, Rabbit,IgG
<b>Dilution :</b>	WB 1:500-2000
<b>Purification :</b>	The antibody was affinity-purified from rabbit antiserum by affinity-chromatography using epitope-specific immunogen.

---

<b>Concentration :</b>	1 mg/ml
<b>Storage Stability :</b>	-15°C to -25°C/1 year(Do not lower than -25°C)
<b>Molecularweight :</b>	43kD
<b>Background :</b>	Fc receptors specifically bind to the Fc region of immunoglobulins (Igs) to mediate the unique functions of each Ig class. FAIM3 encodes an Fc receptor for IgM (see MIM 147020) (Kubagawa et al., 2009 [PubMed 19858324]; Shima et al., 2010 [PubMed 20042454]).[supplied by OMIM, Jul 2010],
<b>Function :</b>	domain:The Ig-like domain is required for the anti-apoptotic ability.,function:May play a role in the immune system processes. Protects cells from FAS-, TNF alpha- and FADD-induced apoptosis without increasing expression of the inhibitors of apoptosis BCL2 and BCLXL. Seems to activate an inhibitory pathway that prevents CASP8 activation following FAS stimulation, rather than blocking apoptotic signals downstream. May inhibit FAS-induced apoptosis by preventing CASP8 processing through CFLAR up-regulation.,induction:By T-cell activation.,miscellaneous:'Toso' is a Japanese liquor drunk on New Year's day to celebrate long life and eternal youth.,similarity:Contains 1 Ig-like (immunoglobulin-like) domain.,tissue specificity:Expressed in lymph nodes, peripheral blood leukocytes, lung, thymus and kidneys. Very weak expression detected in spleen, liver, heart, and salivary gland. Expressed in I
<b>Subcellular Location :</b>	[Isoform 1]: Membrane ; Single-pass membrane protein .; [Isoform 3]: Secreted . Detected in the serum. .
<b>Expression :</b>	Expressed in lymph nodes, peripheral blood leukocytes, lung, thymus and kidneys. Very weak expression detected in spleen, liver, heart, and salivary gland. Expressed in lymphoid cell lines such as Jurkat, CEM-T4, MOLT-4, HB11;19 and Reh. No expression detected in nonhematopoietic cell lines including Hep-G2, HEK293 and HeLa. Detected at high levels in chronic lymphocytic leukemia cells.
<b>Sort :</b>	5908
<b>No4 :</b>	1
<b>Host :</b>	Rabbit
<b>Modifications :</b>	Unmodified

---

## Products Images



Western blot analysis of lysates from MCF-7 cells, primary antibody was diluted at 1:1000, 4° over night