

AK1BA rabbit pAb

Catalog No :	YT6598
Reactivity :	Human
Applications :	WB
Target :	AK1BA
Fields :	>>Pentose and glucuronate interconversions;>>Fructose and mannose metabolism;>>Galactose metabolism;>>Glycerolipid metabolism;>>Folate biosynthesis;>>Metabolic pathways
Gene Name :	AKR1B10 AKR1B11
Protein Name :	AK1BA
Human Gene Id :	57016
Human Swiss Prot No :	O60218
Immunogen :	Synthesized peptide derived from human AK1BA AA range: 124-174
Specificity :	This antibody detects endogenous levels of AK1BA at Human
Formulation :	Liquid in PBS containing 50% glycerol, 0.5% BSA and 0.02% sodium azide.
Source :	Polyclonal, Rabbit,IgG
Dilution :	WB 1:500-2000
Purification :	The antibody was affinity-purified from rabbit antiserum by affinity-chromatography using epitope-specific immunogen.
Concentration :	1 mg/ml
Storage Stability :	-15°C to -25°C/1 year(Do not lower than -25°C)
Molecularweight :	35kD

Background : This gene encodes a member of the aldo/keto reductase superfamily, which consists of more than 40 known enzymes and proteins. This member can efficiently reduce aliphatic and aromatic aldehydes, and it is less active on hexoses. It is highly expressed in adrenal gland, small intestine, and colon, and may play an important role in liver carcinogenesis. [provided by RefSeq, Jul 2008],

Function : enzyme regulation:Inhibited by tolrestat.,function:Acts as all-trans-retinaldehyde reductase. Can efficiently reduce aliphatic and aromatic aldehydes, and is less active on hexoses (in vitro). May be responsible for detoxification of reactive aldehydes in the digested food before the nutrients are passed on to other organs.,similarity:Belongs to the aldo/keto reductase family.,tissue specificity:Found in many tissues. Highly expressed in small intestine, colon and adrenal gland.,

Subcellular Location : Lysosome . Secreted . Secreted through a lysosome-mediated non-classical pathway.

Expression : Found in many tissues. Highly expressed in small intestine, colon and adrenal gland.

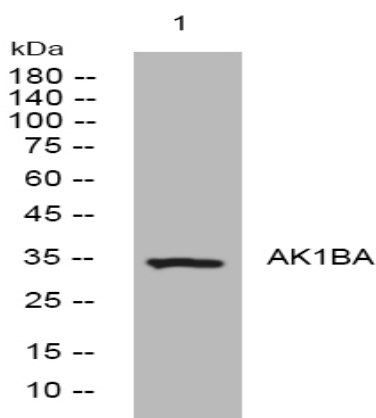
Sort : 1822

No4 : 1

Host : Rabbit

Modifications : Unmodified

Products Images



Western blot analysis of lysates from K562 cells, primary antibody was diluted at 1:1000, 4° over night