

CBY1 rabbit pAb

Catalog No :	YT6597
Reactivity :	Human;Mouse;Rat
Applications :	WB
Target :	CBY1
Fields :	>>Wnt signaling pathway
Gene Name :	CBY1 ARB1 C22orf2 CBY PGEA1 HRIHFB2025
Protein Name :	CBY1
Human Gene Id :	25776
Human Swiss Prot No :	Q9Y3M2
Mouse Gene Id :	73739
Mouse Swiss Prot No :	Q9D1C2
Rat Gene Id :	246768
Rat Swiss Prot No :	Q8K4I6
Immunogen :	Synthesized peptide derived from human CBY1 AA range: 71-121
Specificity :	This antibody detects endogenous levels of CBY1 at Human/Mouse/Rat
Formulation :	Liquid in PBS containing 50% glycerol, 0.5% BSA and 0.02% sodium azide.
Source :	Polyclonal, Rabbit,IgG
Dilution :	WB 1[?]500-2000
Purification :	The antibody was affinity-purified from rabbit antiserum by affinity-

chromatography using epitope-specific immunogen.

Concentration : 1 mg/ml

Storage Stability : -15°C to -25°C/1 year (Do not lower than -25°C)

Molecularweight : 14kD

Background : Beta-catenin is a transcriptional activator and oncoprotein involved in the development of several cancers. The protein encoded by this gene interacts directly with the C-terminal region of beta-catenin, inhibiting oncogenic beta-catenin-mediated transcriptional activation by competing with transcription factors for binding to beta-catenin. Two transcript variants encoding different isoforms have been found for this gene. [provided by RefSeq, Jul 2008],

Function : function: Inhibits the Wnt/Wingless pathway by binding to beta-catenin and inhibiting beta-catenin-mediated transcriptional activation through competition with TCF/LEF transcription factors. Has also been shown to play a role in regulating the intracellular trafficking of polycystin-2/PKD2 and possibly of other intracellular proteins. Promotes adipocyte and cardiomyocyte differentiation., miscellaneous: Chibby is Japanese for 'small'; the gene was so named for the RNAi phenotype seen in flies., similarity: Belongs to the chibby family., subcellular location: Nuclear, in a punctate manner. Also found in the trans-Golgi., subunit: Homodimer; interacts with polycystin-2/PKD2 and GM130. Interacts with the C-terminal region of beta-catenin., tissue specificity: Widely expressed. Expressed at higher levels in heart, skeletal muscle, kidney and placenta. Also found in brain, lung, liver and testis. Signif

Subcellular Location : Nucleus speckle . Cytoplasm, cytoskeleton, cilium basal body . Cytoplasm, cytoskeleton, microtubule organizing center, centrosome, centriole . Golgi apparatus. Golgi apparatus, trans-Golgi network .

Expression : Widely expressed. Expressed at higher levels in heart, skeletal muscle, kidney and placenta. Also found in brain, lung, liver and testis. Significantly down-regulated in thyroid and metastatic uterine tumors.

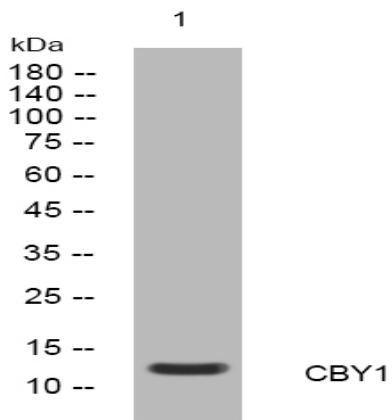
Sort : 3289

No4 : 1

Host : Rabbit

Modifications : Unmodified

Products Images



Western blot analysis of lysates from KB cells, primary antibody was diluted at 1:1000, 4° over night