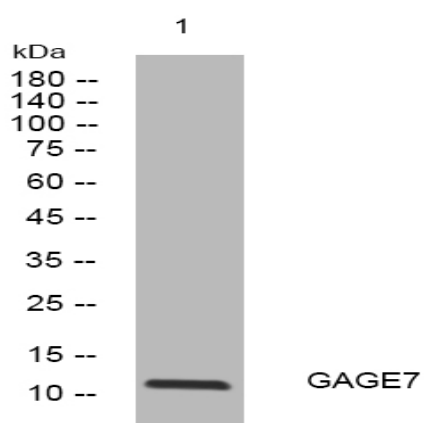


GAGE7 rabbit pAb

Catalog No :	YT6595
Reactivity :	Human
Applications :	WB
Target :	GAGE7
Gene Name :	GAGE7 GAGE12I GAGE7B
Protein Name :	GAGE7
Human Gene Id :	100008586
Human Swiss Prot No :	O76087
Immunogen :	Synthesized peptide derived from human GAGE7 AA range: 41-91
Specificity :	This antibody detects endogenous levels of GAGE7 at Human
Formulation :	Liquid in PBS containing 50% glycerol, 0.5% BSA and 0.02% sodium azide.
Source :	Polyclonal, Rabbit,IgG
Dilution :	WB 1[?]500-2000
Purification :	The antibody was affinity-purified from rabbit antiserum by affinity-chromatography using epitope-specific immunogen.
Concentration :	1 mg/ml
Storage Stability :	-15°C to -25°C/1 year(Do not lower than -25°C)
Molecularweight :	13kD
Expression :	Expressed in some prostate cancer tissues but not in normal prostate tissue.

Sort : 6394**No4 :** 1**Host :** Rabbit**Modifications :** Unmodified

Products Images



Western blot analysis of lysates from THP-1 cells, primary antibody was diluted at 1:1000, 4° over night