

## KI18A rabbit pAb

<b>Catalog No :</b>	YT6593
<b>Reactivity :</b>	Human;Mouse
<b>Applications :</b>	WB;ELISA;IHC
<b>Target :</b>	KI18A
<b>Gene Name :</b>	KIF18A OK/SW-cl.108
<b>Protein Name :</b>	KI18A
<b>Human Gene Id :</b>	81930
<b>Human Swiss Prot No :</b>	Q8NI77
<b>Mouse Gene Id :</b>	228421
<b>Mouse Swiss Prot No :</b>	Q91WD7
<b>Immunogen :</b>	Synthesized peptide derived from human KI18A AA range: 713-763
<b>Specificity :</b>	This antibody detects endogenous levels of KI18A at Human/Mouse
<b>Formulation :</b>	Liquid in PBS containing 50% glycerol, 0.5% BSA and 0.02% sodium azide.
<b>Source :</b>	Polyclonal, Rabbit,IgG
<b>Dilution :</b>	WB 1:500-2000;IHC 1:50-300; ELISA 2000-20000
<b>Purification :</b>	The antibody was affinity-purified from rabbit antiserum by affinity-chromatography using epitope-specific immunogen.
<b>Concentration :</b>	1 mg/ml
<b>Storage Stability :</b>	-15°C to -25°C/1 year(Do not lower than -25°C)

**Molecularweight :** 99kD

**Background :** KIF18A is a member of the kinesin superfamily of microtubule-associated molecular motors (see MIM 148760) that use hydrolysis of ATP to produce force and movement along microtubules (Luboshits and Benayahu, 2005 [PubMed 15878648]).[supplied by OMIM, Aug 2008],

**Function :** similarity:Belongs to the kinesin-like protein family.,similarity:Contains 1 kinesin-motor domain.,

**Subcellular Location :** Cell projection, ruffle. Cytoplasm. Nucleus. Cytoplasm, cytoskeleton, microtubule organizing center, centrosome.

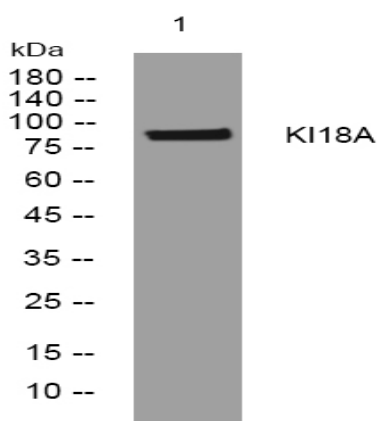
**Sort :** 8899

**No4 :** 1

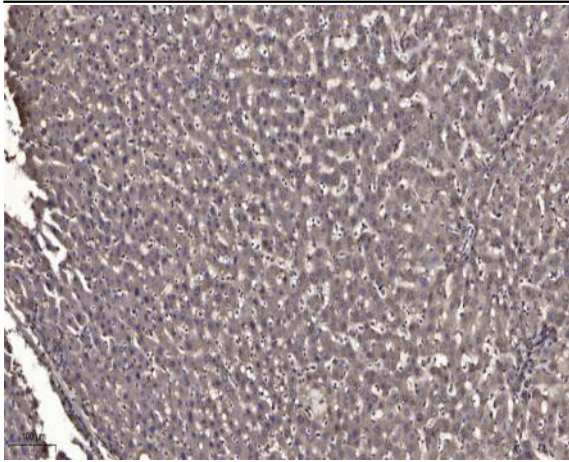
**Host :** Rabbit

**Modifications :** Unmodified

## Products Images



Western blot analysis of lysates from VEC cells, primary antibody was diluted at 1:1000, 4° over night



Immunohistochemical analysis of paraffin-embedded human liver cancer. 1, Antibody was diluted at 1:200(4° overnight). 2, Tris-EDTA,pH9.0 was used for antigen retrieval. 3,Secondary antibody was diluted at 1:200(room temperature, 45min).