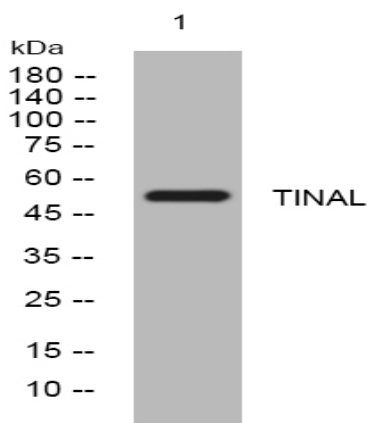


TINAL rabbit pAb

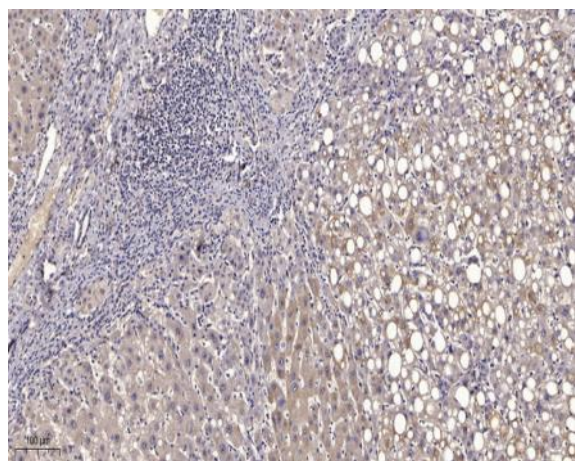
Catalog No :	YT6591
Reactivity :	Human;Mouse;Rat
Applications :	WB;IHC
Target :	TINAL
Gene Name :	TINAGL1 GIS5 LCN7 OLRG2 TINAGL PP6614 PSEC0088 UNQ204/PRO230
Protein Name :	TINAL
Human Gene Id :	64129
Human Swiss Prot No :	Q9GZM7
Mouse Gene Id :	94242
Mouse Swiss Prot No :	Q99JR5
Rat Gene Id :	94174
Rat Swiss Prot No :	Q9EQT5
Immunogen :	Synthesized peptide derived from human TINAL AA range: 249-299
Specificity :	This antibody detects endogenous levels of TINAL at Human/Mouse/Rat
Formulation :	Liquid in PBS containing 50% glycerol, 0.5% BSA and 0.02% sodium azide.
Source :	Polyclonal, Rabbit,IgG
Dilution :	WB 1:500-2000;IHC 1:50-300
Purification :	The antibody was affinity-purified from rabbit antiserum by affinity-chromatography using epitope-specific immunogen.

Concentration :	1 mg/ml
Storage Stability :	-15°C to -25°C/1 year(Do not lower than -25°C)
Molecularweight :	51kD
Background :	The protein encoded by this gene is similar in sequence to tubulointerstitial nephritis antigen, a secreted glycoprotein that is recognized by antibodies in some types of immune-related tubulointerstitial nephritis. Three transcript variants encoding different isoforms have been found for this gene. [provided by RefSeq, Feb 2011],
Function :	function:May be implicated in the adrenocortical zonation and in mechanisms for repressing the CYP11B1 gene expression in adrenocortical cells.,PTM:Glycosylated.,similarity:Belongs to the peptidase C1 family.,similarity:Contains 1 SMB (somatomedin-B) domain.,tissue specificity:Highly expressed in aorta, heart, placenta, kidney and a colorectal adenocarcinoma cell line. Moderately expressed in skeletal muscle, pancreas, lung, lymph nodes, adrenal gland, bone marrow and thyroid. Weakly expressed in colon, small intestine, ovary, spleen, testis and prostate. Predominantly found in vascular smooth muscle cells, but also in cardiac and skeletal muscle cells as well as kidney.,
Subcellular Location :	Secreted .
Expression :	Highly expressed in aorta, heart, placenta, kidney and a colorectal adenocarcinoma cell line. Moderately expressed in skeletal muscle, pancreas, lung, lymph nodes, adrenal gland, bone marrow and thyroid. Weakly expressed in colon, small intestine, ovary, spleen, testis and prostate. Predominantly found in vascular smooth muscle cells, but also in cardiac and skeletal muscle cells as well as kidney.
Sort :	17171
No4 :	1
Host :	Rabbit
Modifications :	Unmodified

[Products Images](#)



Western blot analysis of lysates from A431 cells, primary antibody was diluted at 1:1000, 4° over night



Immunohistochemical analysis of paraffin-embedded human liver cancer. 1, Antibody was diluted at 1:200(4° overnight). 2, Tris-EDTA,pH9.0 was used for antigen retrieval. 3,Secondary antibody was diluted at 1:200(room temperature, 45min).