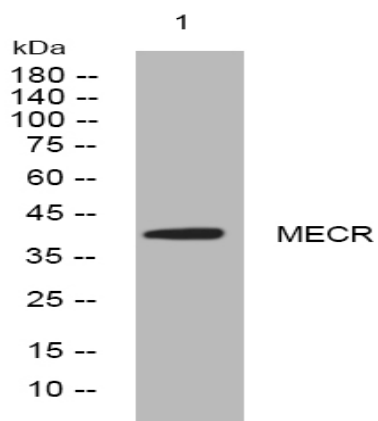


MECR rabbit pAb

Catalog No :	YT6590
Reactivity :	Human;Mouse;Rat
Applications :	WB
Target :	MECR
Fields :	>>Fatty acid biosynthesis;>>Fatty acid elongation;>>Metabolic pathways;>>Fatty acid metabolism
Gene Name :	MECR NBRF1 CGI-63
Protein Name :	MECR
Human Gene Id :	51102
Human Swiss Prot No :	Q9BV79
Mouse Gene Id :	26922
Mouse Swiss Prot No :	Q9DCS3
Rat Gene Id :	29470
Rat Swiss Prot No :	Q9Z311
Immunogen :	Synthesized peptide derived from human MECR AA range: 160-210
Specificity :	This antibody detects endogenous levels of MECR at Human/Mouse/Rat
Formulation :	Liquid in PBS containing 50% glycerol, 0.5% BSA and 0.02% sodium azide.
Source :	Polyclonal, Rabbit,IgG
Dilution :	WB 1:500-2000

Purification :	The antibody was affinity-purified from rabbit antiserum by affinity-chromatography using epitope-specific immunogen.
Concentration :	1 mg/ml
Storage Stability :	-15°C to -25°C/1 year(Do not lower than -25°C)
Molecularweight :	41kD
Function :	<p>catalytic activity:Acyl-CoA + NADP(+) = trans-2,3-dehydroacyl-CoA + NADPH.,function:Catalyzes the reduction of trans-2-enoyl-CoA to acyl-CoA with chain length from C6 to C16 in an NADPH-dependent manner with preference to medium chain length substrate. May have a role in the mitochondrial synthesis of fatty acids.,similarity:Belongs to the zinc-containing alcohol dehydrogenase family. Quinone oxidoreductase subfamily.,subunit:Homodimer.,tissue specificity:Highly expressed in skeletal and heart muscle. Expressed at lower level in placenta, liver, kidney and pancreas. Weakly or not expressed in lung.,</p>
Subcellular Location :	[Isoform 1]: Mitochondrion .; [Isoform 2]: Cytoplasm . Nucleus .
Expression :	Highly expressed in skeletal and heart muscle. Expressed at lower level in placenta, liver, kidney and pancreas. Weakly or not expressed in lung.
Sort :	9501
No4 :	1
Host :	Rabbit
Modifications :	Unmodified

Products Images



Western blot analysis of lysates from MDA-MB cells, primary antibody was diluted at 1:1000, 4° over night