

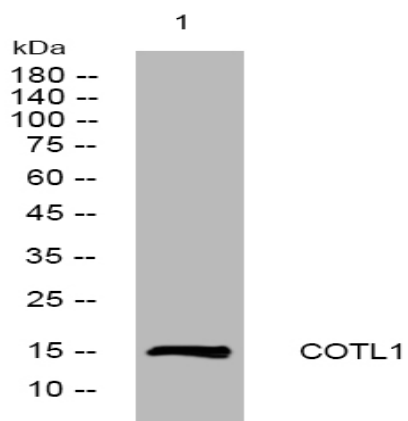
## COTL1 rabbit pAb

<b>Catalog No :</b>	YT6584
<b>Reactivity :</b>	Human;Mouse;Rat
<b>Applications :</b>	WB
<b>Target :</b>	COTL1
<b>Gene Name :</b>	COTL1 CLP
<b>Protein Name :</b>	COTL1
<b>Human Gene Id :</b>	23406
<b>Human Swiss Prot No :</b>	Q14019
<b>Mouse Gene Id :</b>	72042
<b>Mouse Swiss Prot No :</b>	Q9CQI6
<b>Rat Gene Id :</b>	361422
<b>Rat Swiss Prot No :</b>	B0BNA5
<b>Immunogen :</b>	Synthesized peptide derived from human COTL1 AA range: 29-79
<b>Specificity :</b>	This antibody detects endogenous levels of COTL1 at Human/Mouse/Rat
<b>Formulation :</b>	Liquid in PBS containing 50% glycerol, 0.5% BSA and 0.02% sodium azide.
<b>Source :</b>	Polyclonal, Rabbit,IgG
<b>Dilution :</b>	WB 1:500-2000
<b>Purification :</b>	The antibody was affinity-purified from rabbit antiserum by affinity-chromatography using epitope-specific immunogen.

<b>Concentration :</b>	1 mg/ml
<b>Storage Stability :</b>	-15°C to -25°C/1 year(Do not lower than -25°C)
<b>Molecularweight :</b>	16kD
<b>Background :</b>	<p>This gene encodes one of the numerous actin-binding proteins which regulate the actin cytoskeleton. This protein binds F-actin, and also interacts with 5-lipoxygenase, which is the first committed enzyme in leukotriene biosynthesis. Although this gene has been reported to map to chromosome 17 in the Smith-Magenis syndrome region, the best alignments for this gene are to chromosome 16. The Smith-Magenis syndrome region is the site of two related pseudogenes. [provided by RefSeq, Jul 2008],</p>
<b>Function :</b>	<p>function: Binds to F-actin in a calcium-independent manner. Has no direct effect on actin depolymerization., similarity: Belongs to the actin-binding proteins ADF family. Coactosin subfamily., similarity: Contains 1 ADF-H domain., subunit: Interacts with 5-lipoxygenase (5LO) in a calcium-independent manner., tissue specificity: Widely expressed with highest levels in placenta, lung, kidney and peripheral blood leukocytes and lower levels in brain, liver and pancreas.,</p>
<b>Subcellular Location :</b>	Cytoplasm . Cytoplasm, cytoskeleton . Nucleus .
<b>Expression :</b>	Widely expressed with highest levels in placenta, lung, kidney and peripheral blood leukocytes and lower levels in brain, liver and pancreas.
<b>Sort :</b>	4454
<b>No4 :</b>	1
<b>Host :</b>	Rabbit
<b>Modifications :</b>	Unmodified

---

## Products Images



Western blot analysis of lysates from HCT116 cells, primary antibody was diluted at 1:1000, 4° over night