

BAZ1A rabbit pAb

Catalog No :	YT6583
Reactivity :	Human;Mouse
Applications :	WB
Target :	BAZ1A
Gene Name :	BAZ1A ACF1 WCRF180 HSPC317
Protein Name :	BAZ1A
Human Gene Id :	11177
Human Swiss Prot No :	Q9NRL2
Mouse Swiss Prot No :	O88379
Immunogen :	Synthesized peptide derived from human BAZ1A AA range: 736-786
Specificity :	This antibody detects endogenous levels of BAZ1A at Human/Mouse
Formulation :	Liquid in PBS containing 50% glycerol, 0.5% BSA and 0.02% sodium azide.
Source :	Polyclonal, Rabbit,IgG
Dilution :	WB 1:500-2000
Purification :	The antibody was affinity-purified from rabbit antiserum by affinity-chromatography using epitope-specific immunogen.
Concentration :	1 mg/ml
Storage Stability :	-15°C to -25°C/1 year(Do not lower than -25°C)
Molecularweight :	171kD

Background : The BAZ1A gene encodes the accessory subunit of the ATP-dependent chromatin assembly factor (ACF), a member of the ISWI ('imitation switch') family of chromatin remodeling complexes (summarized by Racki et al., 2009 [PubMed 20033039]).[supplied by OMIM, Apr 2010],

Function : function:May play a role in transcriptional regulation. May be involved in the formation or maintenance of heterochromatin playing a critical role in developmental control.,miscellaneous:Stimulated by double-stranded DNA and nucleosomal DNA.,similarity:Belongs to the WAL family.,similarity:Contains 1 bromo domain.,similarity:Contains 1 DDT domain.,similarity:Contains 1 PHD-type zinc finger.,similarity:Contains 1 WAC domain.,subcellular location:May target the CHRAC complex to heterochromatin.,subunit:Together with CHRAC1, POLE3 and SMARCA5 proteins, it forms the ISWI chromatin-remodeling complex, CHRAC.,tissue specificity:Highly expressed in testis and at low or undetectable levels in other tissues analyzed.,

Subcellular Location : Nucleus. May target the CHRAC complex to heterochromatin.

Expression : Highly expressed in testis and at low or undetectable levels in other tissues analyzed.

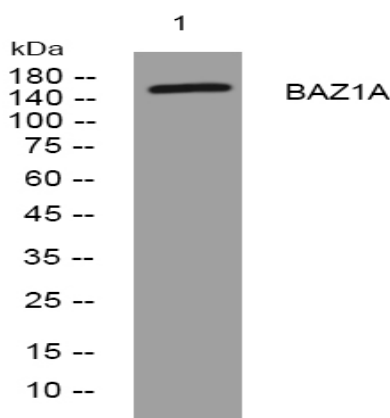
Sort : 2598

No4 : 1

Host : Rabbit

Modifications : Unmodified

Products Images



Western blot analysis of lysates from HuvEc cells, primary antibody was diluted at 1:1000, 4° over night