

LTC4S rabbit pAb

Catalog No :	YT6581
Reactivity :	Human;Mouse;Rat
Applications :	WB
Target :	LTC4S
Fields :	>>Arachidonic acid metabolism;>>Metabolic pathways
Gene Name :	LTC4S
Protein Name :	LTC4S
Human Gene Id :	4056
Human Swiss Prot No :	Q16873
Mouse Gene Id :	17001
Mouse Swiss Prot No :	Q60860
Rat Gene Id :	114097
Rat Swiss Prot No :	Q925U2
Immunogen :	Synthesized peptide derived from human LTC4S AA range: 29-79
Specificity :	This antibody detects endogenous levels of LTC4S at Human/Mouse/Rat
Formulation :	Liquid in PBS containing 50% glycerol, 0.5% BSA and 0.02% sodium azide.
Source :	Polyclonal, Rabbit,IgG
Dilution :	WB 1[?]500-2000
Purification :	The antibody was affinity-purified from rabbit antiserum by affinity-

chromatography using epitope-specific immunogen.

Concentration : 1 mg/ml

Storage Stability : -15°C to -25°C/1 year(Do not lower than -25°C)

Molecularweight : 17kD

Background : The MAPEG (Membrane Associated Proteins in Eicosanoid and Glutathione metabolism) family includes a number of human proteins, several of which are involved the production of leukotrienes. This gene encodes an enzyme that catalyzes the first step in the biosynthesis of cysteinyl leukotrienes, potent biological compounds derived from arachidonic acid. Leukotrienes have been implicated as mediators of anaphylaxis and inflammatory conditions such as human bronchial asthma. This protein localizes to the nuclear envelope and adjacent endoplasmic reticulum. [provided by RefSeq, Jul 2008],

Function : catalytic activity:Leukotriene C(4) = leukotriene A(4) + glutathione.,disease:Defects in LTC4S are the cause of leukotriene C4 synthase deficiency (LTC4 synthase deficiency) [MIM:246530]. LTC4 synthase deficiency is a fatal neurometabolic developmental disorder. It is associated with muscular hypotonia, psychomotor retardation, failure to thrive, and microcephaly.,function:Catalyzes the conjugation of leukotriene A4 with reduced glutathione to form leukotriene C4.,similarity:Belongs to the MAPEG family.,subunit:Homotrimer. Interacts with ALOX5AP and ALOX5.,tissue specificity:Detected in lung, platelets and the myelogenous leukemia cell line KG-1 (at protein level). LTC4S activity is present in eosinophils, basophils, mast cells, certain phagocytic mononuclear cells, endothelial cells, vascular smooth muscle cells and platelets.,

Subcellular Location : Nucleus outer membrane ; Multi-pass membrane protein. Endoplasmic reticulum membrane ; Multi-pass membrane protein. Nucleus membrane ; Multi-pass membrane protein.

Expression : Detected in lung, platelets and the myelogenous leukemia cell line KG-1 (at protein level). LTC4S activity is present in eosinophils, basophils, mast cells, certain phagocytic mononuclear cells, endothelial cells, vascular smooth muscle cells and platelets.

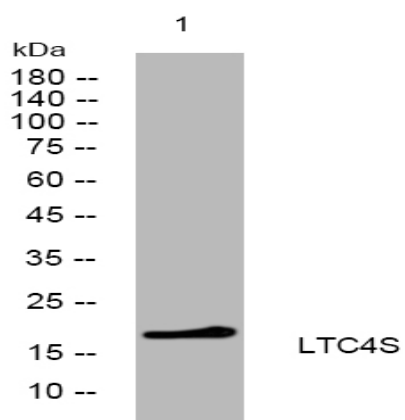
Sort : 9277

No4 : 1

Host : Rabbit

Modifications : Unmodified

Products Images



Western blot analysis of lysates from 293T cells, primary antibody was diluted at 1:1000, 4° over night