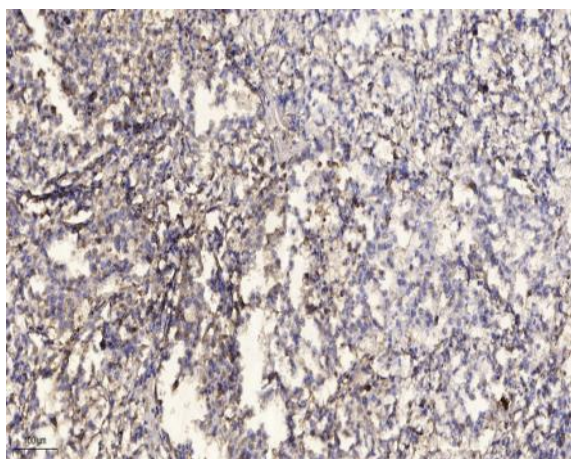


## PYDC1 rabbit pAb

<b>Catalog No :</b>	YT6579
<b>Reactivity :</b>	Human
<b>Applications :</b>	IHC;IF
<b>Target :</b>	PYDC1
<b>Fields :</b>	>>NOD-like receptor signaling pathway
<b>Gene Name :</b>	PYDC1 ASC2 ASCI POP1 PYC1
<b>Protein Name :</b>	PYDC1
<b>Human Gene Id :</b>	260434
<b>Human Swiss Prot No :</b>	Q8WXC3
<b>Immunogen :</b>	Synthesized peptide derived from human PYDC1 AA range: 25-75
<b>Specificity :</b>	This antibody detects endogenous levels of PYDC1 at Human
<b>Formulation :</b>	Liquid in PBS containing 50% glycerol, 0.5% BSA and 0.02% sodium azide.
<b>Source :</b>	Polyclonal, Rabbit,IgG
<b>Dilution :</b>	IHC 1:50-200. IF 1:50-200
<b>Purification :</b>	The antibody was affinity-purified from rabbit antiserum by affinity-chromatography using epitope-specific immunogen.
<b>Concentration :</b>	1 mg/ml
<b>Storage Stability :</b>	-15°C to -25°C/1 year(Do not lower than -25°C)
<b>Molecularweight :</b>	10kD

<b>Function :</b>	function:Associates with apoptosis-associated specklike protein containing a CARD domain (ASC) and modulates its ability to collaborate with pyrin and cryopyrin in NF-kappa-B and pro-caspase-1 activation. Suppresses kinase activity of NF-kappa-B inhibitor kinase (IKK) complex, expression of NF-kappa-B inducible genes and inhibits NF-kappa-B activation by cytokines and LPS.,PTM:Phosphorylated.,similarity:Contains 1 DAPIN domain.,subunit:Interacts with PYCARD/ASC.,tissue specificity:Predominantly expressed in monocytes, macrophages and granulocytes.,
<b>Subcellular Location :</b>	Cytoplasm . Recruited to specks formed by PYCARD within the cytoplasm. .
<b>Expression :</b>	Predominantly expressed in monocytes, macrophages and granulocytes.
<b>Sort :</b>	13180
<b>No4 :</b>	1
<b>Host :</b>	Rabbit
<b>Modifications :</b>	Unmodified

## Products Images



Immunohistochemical analysis of paraffin-embedded human Squamous cell carcinoma of lung. 1, Antibody was diluted at 1:200(4° overnight). 2, Tris-EDTA,pH9.0 was used for antigen retrieval. 3,Secondary antibody was diluted at 1:200(room temperature, 45min).