

TRM44 rabbit pAb

Catalog No :	YT6578
Reactivity :	Human;Mouse
Applications :	WB
Target :	TRM44
Gene Name :	TRMT44 C4orf23 METTL19
Protein Name :	TRM44
Human Gene Id :	152992
Human Swiss Prot No :	Q8IYL2
Mouse Gene Id :	78890
Mouse Swiss Prot No :	Q9D2Q2
Immunogen :	Synthesized peptide derived from human TRM44 AA range: 317-367
Specificity :	This antibody detects endogenous levels of TRM44 at Human/Mouse
Formulation :	Liquid in PBS containing 50% glycerol, 0.5% BSA and 0.02% sodium azide.
Source :	Polyclonal, Rabbit,IgG
Dilution :	WB 1[?]500-2000
Purification :	The antibody was affinity-purified from rabbit antiserum by affinity-chromatography using epitope-specific immunogen.
Concentration :	1 mg/ml
Storage Stability :	-15°C to -25°C/1 year(Do not lower than -25°C)

Molecularweight : 83kD

Background : The protein encoded by this gene is a putative tRNA methyltransferase found in the cytoplasm. Defects in this gene may be a cause of partial epilepsy with pericentral spikes (PEPS), but that has not been proven definitively. [provided by RefSeq, May 2012],

Function : catalytic activity:S-adenosyl-L-methionine + tRNA = S-adenosyl-L-homocysteine + tRNA containing 2'-O-methyluracil.,function:Probable adenosyl-L-methionine (AdoMet)-dependent tRNA (uracil-O(2)-)-methyltransferase.,similarity:Belongs to the TRM44 family.,

Subcellular Location : Cytoplasm .

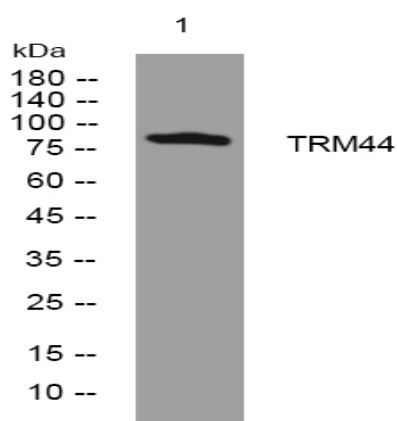
Sort : 23576

No4 : 1

Host : Rabbit

Modifications : Unmodified

Products Images



Western blot analysis of lysates from MCF-7 cells, primary antibody was diluted at 1:1000, 4° over night