

GCM1 rabbit pAb

Catalog No :	YT6575
Reactivity :	Human;Mouse;Rat
Applications :	WB
Target :	GCM1
Fields :	>>Parathyroid hormone synthesis, secretion and action
Gene Name :	GCM1 GCMA
Protein Name :	GCM1
Human Gene Id :	8521
Human Swiss Prot No :	Q9NP62
Mouse Gene Id :	14531
Mouse Swiss Prot No :	P70348
Rat Gene Id :	29394
Rat Swiss Prot No :	Q9Z288
Immunogen :	Synthesized peptide derived from human GCM1 AA range: 298-348
Specificity :	This antibody detects endogenous levels of GCM1 at Human/Mouse/Rat
Formulation :	Liquid in PBS containing 50% glycerol, 0.5% BSA and 0.02% sodium azide.
Source :	Polyclonal, Rabbit,IgG
Dilution :	WB 1[?]500-2000
Purification :	The antibody was affinity-purified from rabbit antiserum by affinity-

chromatography using epitope-specific immunogen.

Concentration : 1 mg/ml

Storage Stability : -15°C to -25°C/1 year(Do not lower than -25°C)

Molecularweight : 48kD

Background : This gene encodes a DNA-binding protein with a gcm-motif (glial cell missing motif). The encoded protein is a homolog of the Drosophila glial cells missing gene (gcm). This protein binds to the GCM-motif (A/G)CCCGCAT, a novel sequence among known targets of DNA-binding proteins. The N-terminal DNA-binding domain confers the unique DNA-binding activity of this protein. [provided by RefSeq, Jul 2008],

Function : function:Transcription factor that is necessary for placental development. Binds to the trophoblast-specific element 2 (TSE2) of the aromatase gene enhancer.,similarity:Contains 1 GCM DNA-binding domain.,tissue specificity:Placenta specific.,

Subcellular Location : Nucleus .

Expression : Highly expressed in the placenta (PubMed:10542267). Expressed in trophoblast cells of the villi (PubMed:27917469).

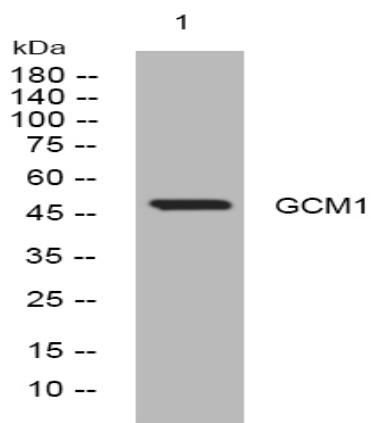
Sort : 6507

No4 : 1

Host : Rabbit

Modifications : Unmodified

Products Images



Western blot analysis of lysates from Jurkat cells, primary antibody was diluted at 1:1000, 4° over night