

SNPC1 rabbit pAb

Catalog No :	YT6574
Reactivity :	Human;Mouse
Applications :	WB;ELISA;IHC
Target :	SNPC1
Gene Name :	SNAPC1 SNAP43
Protein Name :	SNPC1
Human Gene Id :	6617
Human Swiss Prot No :	Q16533
Mouse Gene Id :	75627
Mouse Swiss Prot No :	Q8K0S9
Immunogen :	Synthesized peptide derived from human SNPC1 AA range: 44-94
Specificity :	This antibody detects endogenous levels of SNPC1 at Human/Mouse
Formulation :	Liquid in PBS containing 50% glycerol, 0.5% BSA and 0.02% sodium azide.
Source :	Polyclonal, Rabbit,IgG
Dilution :	WB 1:500-2000;IHC 1:50-300; ELISA 2000-20000
Purification :	The antibody was affinity-purified from rabbit antiserum by affinity-chromatography using epitope-specific immunogen.
Concentration :	1 mg/ml
Storage Stability :	-15°C to -25°C/1 year(Do not lower than -25°C)

Molecularweight : 40kD

Function : function:Part of the SNAPc complex required for the transcription of both RNA polymerase II and III small-nuclear RNA genes. Binds to the proximal sequence element (PSE), a non-TATA-box basal promoter element common to these 2 types of genes. Recruits TBP and BRF2 to the U6 snRNA TATA box.,subunit:Part of the SNAPc complex composed of 5 subunits: SNAPC1, SNAPC2, SNAPC3, SNAPC4 and SNAPC5. SNAPC1 interacts with SNAPC3, SNAPC4 and TBP.,

Subcellular Location : Nucleus.

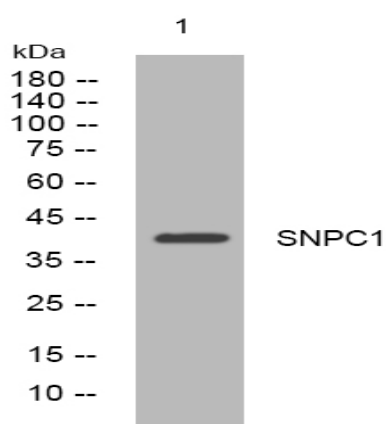
Sort : 16474

No4 : 1

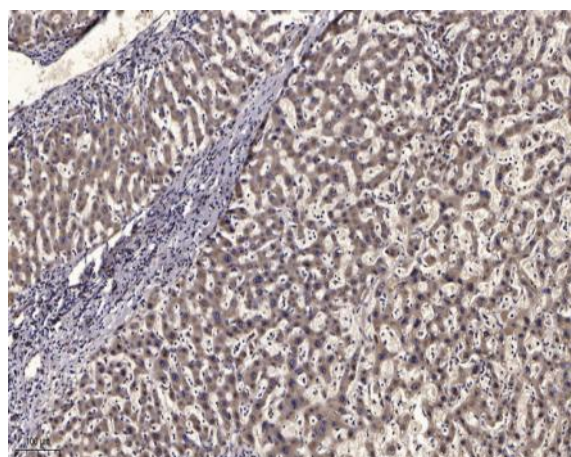
Host : Rabbit

Modifications : Unmodified

Products Images



Western blot analysis of lysates from SH-SY5Y cells, primary antibody was diluted at 1:1000, 4° over night



Immunohistochemical analysis of paraffin-embedded human liver cancer. 1, Antibody was diluted at 1:200(4° overnight). 2, Tris-EDTA,pH9.0 was used for antigen retrieval. 3,Secondary antibody was diluted at 1:200(room temperature, 45min).