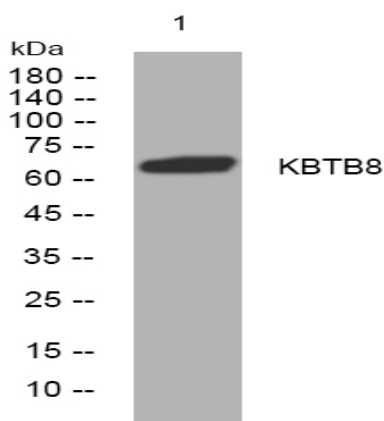


KBTB8 rabbit pAb

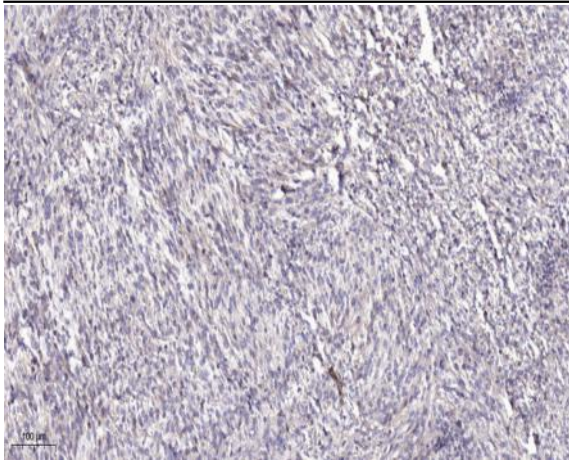
Catalog No :	YT6572
Reactivity :	Human;Mouse;Rat
Applications :	WB;ELISA;IHC
Target :	KBTB8
Gene Name :	KBTBD8 KIAA1842 TAKRP
Protein Name :	KBTB8
Human Gene Id :	84541
Human Swiss Prot No :	Q8NFY9
Mouse Gene Id :	243574
Mouse Swiss Prot No :	Q3UQV5
Rat Gene Id :	500262
Rat Swiss Prot No :	B1H285
Immunogen :	Synthesized peptide derived from human KBTB8 AA range: 445-495
Specificity :	This antibody detects endogenous levels of KBTB8 at Human/Mouse/Rat
Formulation :	Liquid in PBS containing 50% glycerol, 0.5% BSA and 0.02% sodium azide.
Source :	Polyclonal, Rabbit,IgG
Dilution :	WB 1:500-2000;IHC 1:50-300; ELISA 2000-20000
Purification :	The antibody was affinity-purified from rabbit antiserum by affinity-chromatography using epitope-specific immunogen.

Concentration :	1 mg/ml
Storage Stability :	-15°C to -25°C/1 year(Do not lower than -25°C)
Molecularweight :	66kD
Function :	similarity:Contains 1 BACK (BTB/Kelch associated) domain.,similarity:Contains 1 BTB (POZ) domain.,similarity:Contains 5 Kelch repeats.,
Subcellular Location :	Cytoplasm, cytoskeleton, spindle . Golgi apparatus . Translocates to the spindle apparatus during mitosis. .
Sort :	8844
No4 :	1
Host :	Rabbit
Modifications :	Unmodified

Products Images



Western blot analysis of lysates from MDA-MB cells, primary antibody was diluted at 1:1000, 4° over night



Immunohistochemical analysis of paraffin-embedded human Colon cancer. 1, Antibody was diluted at 1:200(4° overnight). 2, Tris-EDTA,pH9.0 was used for antigen retrieval. 3,Secondary antibody was diluted at 1:200(room temperature, 45min).