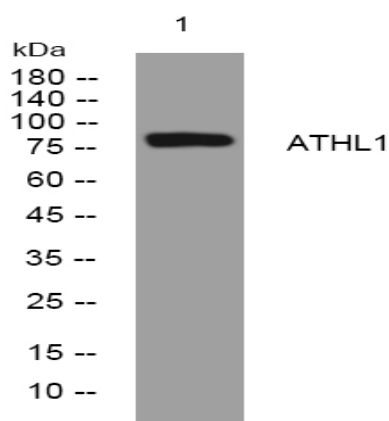


ATHL1 rabbit pAb

Catalog No :	YT6571
Reactivity :	Human;Mouse
Applications :	WB
Target :	ATHL1
Gene Name :	ATHL1
Protein Name :	ATHL1
Human Gene Id :	80162
Human Swiss Prot No :	Q32M88
Mouse Gene Id :	212974
Mouse Swiss Prot No :	Q8BP56
Immunogen :	Synthesized peptide derived from human ATHL1 AA range: 435-485
Specificity :	This antibody detects endogenous levels of ATHL1 at Human/Mouse
Formulation :	Liquid in PBS containing 50% glycerol, 0.5% BSA and 0.02% sodium azide.
Source :	Polyclonal, Rabbit,IgG
Dilution :	WB 1:500-2000
Purification :	The antibody was affinity-purified from rabbit antiserum by affinity-chromatography using epitope-specific immunogen.
Concentration :	1 mg/ml
Storage Stability :	-15°C to -25°C/1 year(Do not lower than -25°C)

Molecularweight :	81kD
Function :	similarity:Belongs to the glycosyl hydrolase 65 family.,
Subcellular Location :	cell wall,
Sort :	2407
No4 :	1
Host :	Rabbit
Modifications :	Unmodified

Products Images



Western blot analysis of lysates from Jurkat cells, primary antibody was diluted at 1:1000, 4° over night