

## CU024 rabbit pAb

<b>Catalog No :</b>	YT6568
<b>Reactivity :</b>	Human
<b>Applications :</b>	WB
<b>Target :</b>	CU024
<b>Gene Name :</b>	LINC00114 C21orf24 NCRNA00114
<b>Protein Name :</b>	CU024
<b>Human Swiss Prot No :</b>	Q6XXX2
<b>Immunogen :</b>	Synthesized peptide derived from human CU024 AA range: 4-54
<b>Specificity :</b>	This antibody detects endogenous levels of CU024 at Human
<b>Formulation :</b>	Liquid in PBS containing 50% glycerol, 0.5% BSA and 0.02% sodium azide.
<b>Source :</b>	Polyclonal, Rabbit,IgG
<b>Dilution :</b>	WB 1[?]500-2000
<b>Purification :</b>	The antibody was affinity-purified from rabbit antiserum by affinity-chromatography using epitope-specific immunogen.
<b>Concentration :</b>	1 mg/ml
<b>Storage Stability :</b>	-15°C to -25°C/1 year(Do not lower than -25°C)
<b>Molecularweight :</b>	15kD
<b>Function :</b>	caution:Product of a dubious CDS prediction. Probable non-coding RNA. At least 6 alternative mRNA transcripts exist, with consensus splice donor and acceptor sites, but no coding potential nor murine ortholog. This protein sequence corresponds to the so-called isoforms C21orf24-6 and C21orf24-7.,tissue specificity:Expressed in a range of cell lines, including B-cell lymphoma and

prostate.,

---

**Expression :** Expressed in a range of cell lines, including B-cell lymphoma and prostate.

---

**Sort :** 4669

---

**No4 :** 1

---

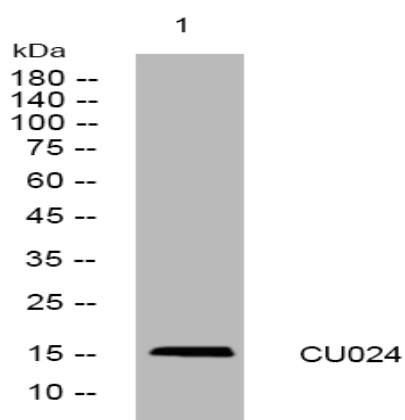
**Host :** Rabbit

---

**Modifications :** Unmodified

---

## Products Images



Western blot analysis of lysates from 293T cells, primary antibody was diluted at 1:1000, 4 ° over night