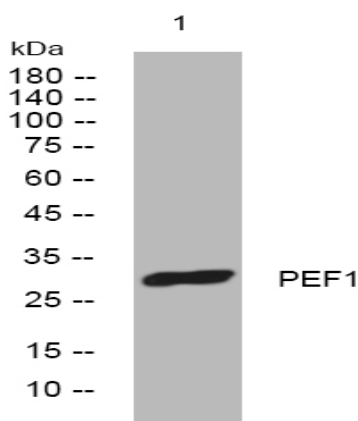


PEF1 rabbit pAb

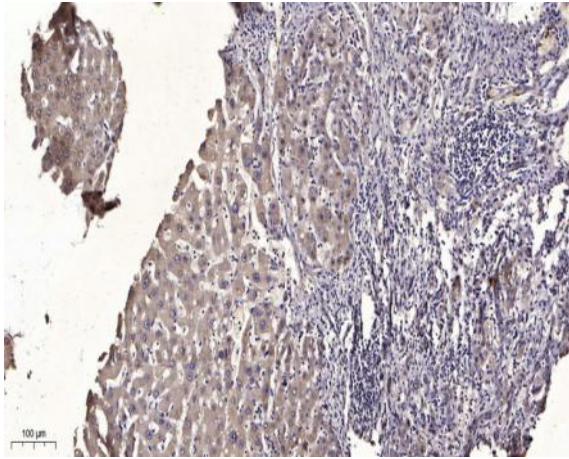
Catalog No :	YT6567
Reactivity :	Human;Mouse;Rat
Applications :	WB;IHC
Target :	PEF1
Gene Name :	PEF1 ABP32 UNQ1845/PRO3573
Protein Name :	PEF1
Human Gene Id :	553115
Human Swiss Prot No :	Q9UBV8
Mouse Gene Id :	67898
Mouse Swiss Prot No :	Q8BFY6
Rat Gene Id :	297900
Rat Swiss Prot No :	Q641Z8
Immunogen :	Synthesized peptide derived from human PEF1 AA range: 109-159
Specificity :	This antibody detects endogenous levels of PEF1 at Human/Mouse/Rat
Formulation :	Liquid in PBS containing 50% glycerol, 0.5% BSA and 0.02% sodium azide.
Source :	Polyclonal, Rabbit,IgG
Dilution :	WB 1:500-2000;IHC 1:50-300
Purification :	The antibody was affinity-purified from rabbit antiserum by affinity-chromatography using epitope-specific immunogen.

Concentration :	1 mg/ml
Storage Stability :	-15°C to -25°C/1 year(Do not lower than -25°C)
Molecularweight :	31kD
Background :	This gene encodes a calcium-binding protein belonging to the penta-EF-hand protein family. The encoded protein has been shown to form a heterodimer with the programmed cell death 6 gene product and may modulate its function in Ca(2+) signaling. Alternative splicing results in multiple transcript variants and a pseudogene has been identified on chromosome 1.[provided by RefSeq, May 2010],
Function :	similarity:Contains 5 EF-hand domains.,subcellular location:Membrane-associated in the presence of Ca(2+).,subunit:Heterodimer; heterodimerizes with PDCD6/ALG2. Dissociates from PDCD6/ALG2 in presence of Ca(2+).,
Subcellular Location :	Cytoplasm . Endoplasmic reticulum . Membrane ; Peripheral membrane protein . Cytoplasmic vesicle, COPII-coated vesicle membrane ; Peripheral membrane protein . Membrane-associated in the presence of Ca(2+) (PubMed:11278427). Localizes to endoplasmic reticulum exit site (ERES) (By similarity). .
Sort :	11810
No4 :	1
Host :	Rabbit
Modifications :	Unmodified

Products Images



Western blot analysis of lysates from HeLa cells, primary antibody was diluted at 1:1000, 4° over night



Immunohistochemical analysis of paraffin-embedded human liver cancer. 1, Antibody was diluted at 1:200(4° overnight). 2, Tris-EDTA,pH9.0 was used for antigen retrieval. 3,Secondary antibody was diluted at 1:200(room temperature, 45min).