

## GRSF1 rabbit pAb

<b>Catalog No :</b>	YT6565
<b>Reactivity :</b>	Human;Mouse
<b>Applications :</b>	WB
<b>Target :</b>	GRSF1
<b>Gene Name :</b>	GRSF1
<b>Protein Name :</b>	GRSF1
<b>Human Gene Id :</b>	2926
<b>Human Swiss Prot No :</b>	Q12849
<b>Mouse Gene Id :</b>	231413
<b>Mouse Swiss Prot No :</b>	Q8C5Q4
<b>Immunogen :</b>	Synthesized peptide derived from human GRSF1 AA range: 302-352
<b>Specificity :</b>	This antibody detects endogenous levels of GRSF1 at Human/Mouse
<b>Formulation :</b>	Liquid in PBS containing 50% glycerol, 0.5% BSA and 0.02% sodium azide.
<b>Source :</b>	Polyclonal, Rabbit,IgG
<b>Dilution :</b>	WB 1:500-2000
<b>Purification :</b>	The antibody was affinity-purified from rabbit antiserum by affinity-chromatography using epitope-specific immunogen.
<b>Concentration :</b>	1 mg/ml
<b>Storage Stability :</b>	-15°C to -25°C/1 year(Do not lower than -25°C)

**Molecularweight :** 53kD

**Background :** The protein encoded by this gene is a cellular protein that binds RNAs containing the G-rich element. The protein is localized in the cytoplasm, and has been shown to stimulate translation of viral mRNAs in vitro. Multiple transcript variants encoding different isoforms have been found for this gene. [provided by RefSeq, Jul 2008],

**Function :** function: Binds RNAs containing the 14 base G-rich element., sequence caution: Unlikely isoform. Aberrant splice sites., similarity: Contains 3 RRM (RNA recognition motif) domains.,

**Subcellular Location :** [Isoform 1]: Mitochondrion matrix . Localizes to mitochondrial RNA granules found in close proximity to the mitochondrial nucleoids. .; [Isoform 2]: Cytoplasm .

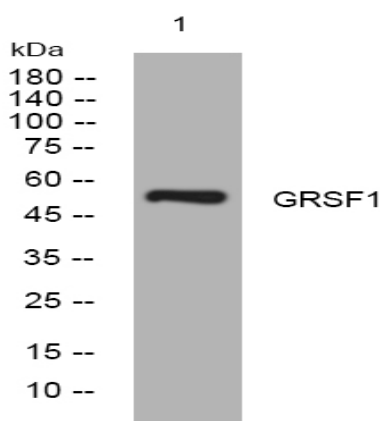
**Sort :** 7153

**No4 :** 1

**Host :** Rabbit

**Modifications :** Unmodified

## Products Images



Western blot analysis of lysates from 293T cells, primary antibody was diluted at 1:1000, 4 ° over night