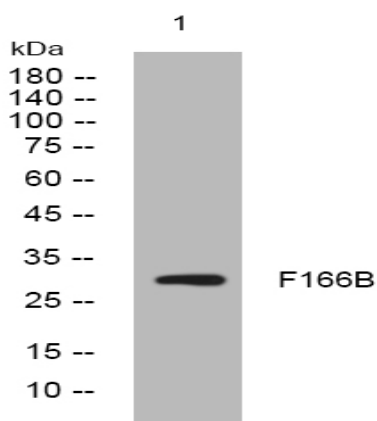


F166B rabbit pAb

Catalog No :	YT6564
Reactivity :	Human;Mouse
Applications :	WB
Target :	F166B
Gene Name :	FAM166B
Protein Name :	F166B
Human Gene Id :	730112
Human Swiss Prot No :	A8MTA8
Mouse Gene Id :	329831
Mouse Swiss Prot No :	A2AIP0
Immunogen :	Synthesized peptide derived from human F166B AA range: 64-114
Specificity :	This antibody detects endogenous levels of F166B at Human/Mouse
Formulation :	Liquid in PBS containing 50% glycerol, 0.5% BSA and 0.02% sodium azide.
Source :	Polyclonal, Rabbit,IgG
Dilution :	WB 1[?]500-2000
Purification :	The antibody was affinity-purified from rabbit antiserum by affinity-chromatography using epitope-specific immunogen.
Concentration :	1 mg/ml
Storage Stability :	-15°C to -25°C/1 year(Do not lower than -25°C)

Molecularweight :	30kD
Function :	similarity:Belongs to the UPF0605 family.,
Sort :	5820
No4 :	1
Host :	Rabbit
Modifications :	Unmodified

Products Images



Western blot analysis of lysates from HEK293 cells, primary antibody was diluted at 1:1000, 4° over night