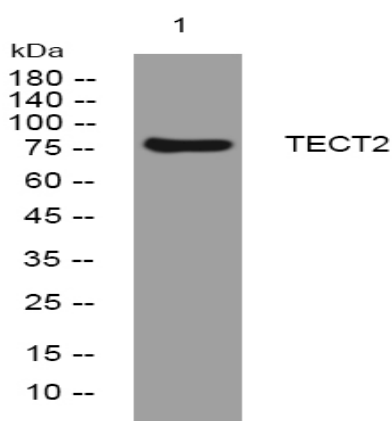


TECT2 rabbit pAb

Catalog No :	YT6561
Reactivity :	Human;Mouse;Rat
Applications :	WB
Target :	TECT2
Gene Name :	TCTN2 C12orf38 TECT2
Protein Name :	TECT2
Human Gene Id :	79867
Human Swiss Prot No :	Q96GX1
Mouse Gene Id :	67978
Mouse Swiss Prot No :	Q2MV57
Rat Gene Id :	689779
Rat Swiss Prot No :	Q3B7D3
Immunogen :	Synthesized peptide derived from human TECT2 AA range: 427-477
Specificity :	This antibody detects endogenous levels of TECT2 at Human/Mouse/Rat
Formulation :	Liquid in PBS containing 50% glycerol, 0.5% BSA and 0.02% sodium azide.
Source :	Polyclonal, Rabbit,IgG
Dilution :	WB 1:500-2000
Purification :	The antibody was affinity-purified from rabbit antiserum by affinity-chromatography using epitope-specific immunogen.

Concentration :	1 mg/ml
Storage Stability :	-15°C to -25°C/1 year(Do not lower than -25°C)
Molecularweight :	77kD
Background :	This gene encodes a type I membrane protein that belongs to the tectonic family. Studies in mice suggest that this protein may be involved in hedgehog signaling, and essential for ciliogenesis. Mutations in this gene are associated with Meckel syndrome type 8. Alternatively spliced transcript variants encoding different isoforms have been found for this gene. [provided by RefSeq, Oct 2011],
Function :	similarity:Belongs to the tectonic family.,
Subcellular Location :	Membrane ; Single-pass type I membrane protein . Cytoplasm, cytoskeleton, cilium basal body . Localizes at the transition zone, a region between the basal body and the ciliary axoneme. .
Sort :	17023
No4 :	1
Host :	Rabbit
Modifications :	Unmodified

Products Images



Western blot analysis of lysates from SH-SY5Y cells, primary antibody was diluted at 1:1000, 4° over night