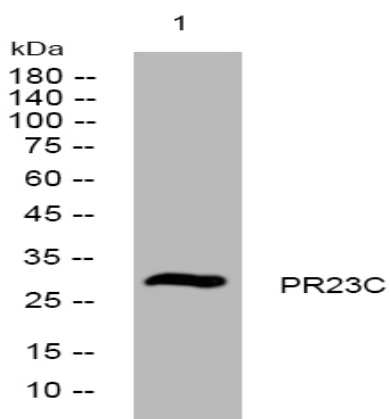


PR23C rabbit pAb

Catalog No :	YT6559
Reactivity :	Human
Applications :	WB
Target :	PR23C
Gene Name :	PRR23C
Protein Name :	PR23C
Human Gene Id :	389152
Human Swiss Prot No :	Q6ZRP0
Immunogen :	Synthesized peptide derived from human PR23C AA range: 28-78
Specificity :	This antibody detects endogenous levels of PR23C at Human
Formulation :	Liquid in PBS containing 50% glycerol, 0.5% BSA and 0.02% sodium azide.
Source :	Polyclonal, Rabbit,IgG
Dilution :	WB 1[?]500-2000
Purification :	The antibody was affinity-purified from rabbit antiserum by affinity-chromatography using epitope-specific immunogen.
Concentration :	1 mg/ml
Storage Stability :	-15 °C to -25 °C/1 year(Do not lower than -25 °C)
Molecularweight :	29kD
Sort :	12979

No4 :	<u>1</u>
Host :	<u>Rabbit</u>
Modifications :	<u>Unmodified</u>

Products Images



Western blot analysis of lysates from 293T cells, primary antibody was diluted at 1:1000, 4° over night