

CB065 rabbit pAb

Catalog No :	YT6552
Reactivity :	Human;Mouse
Applications :	WB
Target :	CB065
Gene Name :	C2orf65
Protein Name :	CB065
Human Gene Id :	130951
Human Swiss Prot No :	Q8TC57
Mouse Gene Id :	110958
Mouse Swiss Prot No :	Q9Z0E1
Immunogen :	Synthesized peptide derived from human CB065 AA range: 1-51
Specificity :	This antibody detects endogenous levels of CB065 at Human/Mouse
Formulation :	Liquid in PBS containing 50% glycerol, 0.5% BSA and 0.02% sodium azide.
Source :	Polyclonal, Rabbit,IgG
Dilution :	WB 1:500-2000
Purification :	The antibody was affinity-purified from rabbit antiserum by affinity-chromatography using epitope-specific immunogen.
Concentration :	1 mg/ml
Storage Stability :	-15°C to -25°C/1 year(Do not lower than -25°C)

Molecularweight : 58kD

Background : This gene encodes a protein that is likely to function in progression of meiosis. A similar protein in mouse plays a role in gametogenesis in both sexes. Alternate splicing results in multiple transcript variants encoding different isoforms. [provided by RefSeq, Jul 2013],

Function : function:May be involved in gametogenesis.,

Subcellular Location : Cytoplasm .

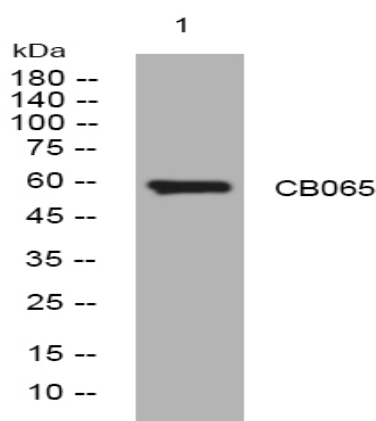
Sort : 3259

No4 : 1

Host : Rabbit

Modifications : Unmodified

Products Images



Western blot analysis of lysates from HeLa cells, primary antibody was diluted at 1:1000, 4° over night