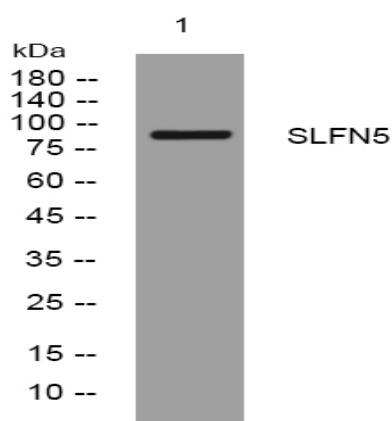


SLFN5 rabbit pAb

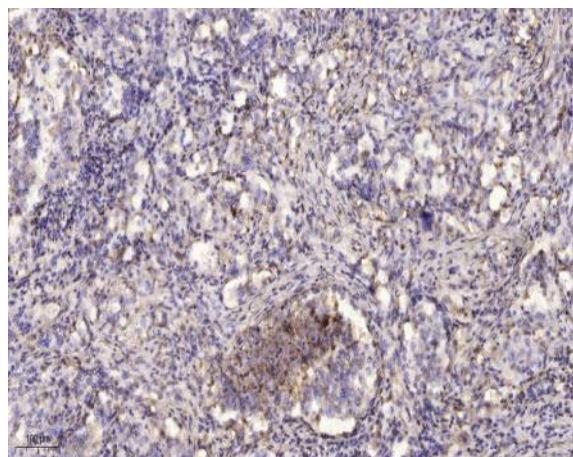
Catalog No :	YT6549
Reactivity :	Human;Mouse
Applications :	WB;ELISA;IHC
Target :	SLFN5
Gene Name :	SLFN5
Protein Name :	SLFN5
Human Gene Id :	162394
Human Swiss Prot No :	Q08AF3
Mouse Gene Id :	327978
Mouse Swiss Prot No :	Q8CBA2
Immunogen :	Synthesized peptide derived from human SLFN5 AA range: 707-757
Specificity :	This antibody detects endogenous levels of SLFN5 at Human/Mouse
Formulation :	Liquid in PBS containing 50% glycerol, 0.5% BSA and 0.02% sodium azide.
Source :	Polyclonal, Rabbit,IgG
Dilution :	WB 1:500-2000;IHC 1:50-300; ELISA 2000-20000
Purification :	The antibody was affinity-purified from rabbit antiserum by affinity-chromatography using epitope-specific immunogen.
Concentration :	1 mg/ml
Storage Stability :	-15°C to -25°C/1 year(Do not lower than -25°C)

Molecularweight : 98kD**Function :** function:May have a role in hematopoietic cell differentiation.,similarity:Belongs to the Schlafen family.,**Subcellular Location :** nucleus,**Sort :** 16370**No4 :** 1**Host :** Rabbit**Modifications :** Unmodified

Products Images



Western blot analysis of lysates from K562 cells, primary antibody was diluted at 1:1000, 4° over night



Immunohistochemical analysis of paraffin-embedded human lung cancer. 1, Antibody was diluted at 1:200(4° overnight). 2, Tris-EDTA,pH9.0 was used for antigen retrieval. 3,Secondary antibody was diluted at 1:200(room temperature, 45min).