

ZF161 rabbit pAb

Catalog No :	YT6548
Reactivity :	Human;Mouse
Applications :	WB
Target :	ZF161
Gene Name :	ZFP161 ZBTB14 ZNF478
Protein Name :	ZF161
Human Gene Id :	7541
Human Swiss Prot No :	O43829
Mouse Gene Id :	22666
Mouse Swiss Prot No :	Q08376
Immunogen :	Synthesized peptide derived from human ZF161 AA range: 116-166
Specificity :	This antibody detects endogenous levels of ZF161 at Human/Mouse
Formulation :	Liquid in PBS containing 50% glycerol, 0.5% BSA and 0.02% sodium azide.
Source :	Polyclonal, Rabbit,IgG
Dilution :	WB 1:500-2000
Purification :	The antibody was affinity-purified from rabbit antiserum by affinity-chromatography using epitope-specific immunogen.
Concentration :	1 mg/ml
Storage Stability :	-15°C to -25°C/1 year(Do not lower than -25°C)

Molecularweight : 49kD

Function : domain:The BTB/POZ domain seems to direct the protein to discrete regions in the nucleus.,function:Transcriptional repressor of c-Myc and thymidine kinase promoters (By similarity). Transcriptional activator of the dopamine transporter (DAT), binding it's promoter at the consensus sequence 5'-CCTGCACAGTTCACGGA-3'.,similarity:Belongs to the krueppel C2H2-type zinc-finger protein family.,similarity:Contains 1 BTB (POZ) domain.,similarity:Contains 5 C2H2-type zinc fingers.,

Subcellular Location : Nucleus . Colocalizes with ZBTB21 in nucleus in HEK293 cells.

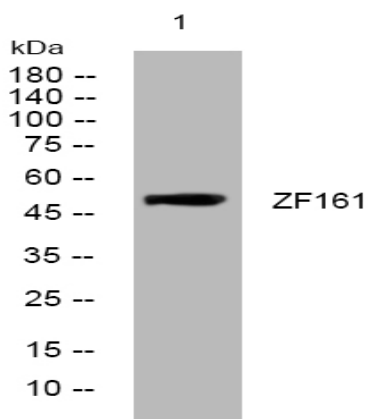
Sort : 24509

No4 : 1

Host : Rabbit

Modifications : Unmodified

Products Images



Western blot analysis of lysates from U2OS cells, primary antibody was diluted at 1:1000, 4° over night