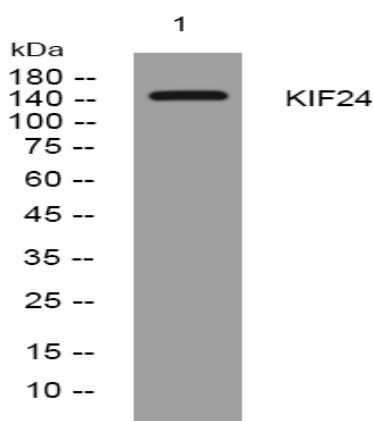


KIF24 rabbit pAb

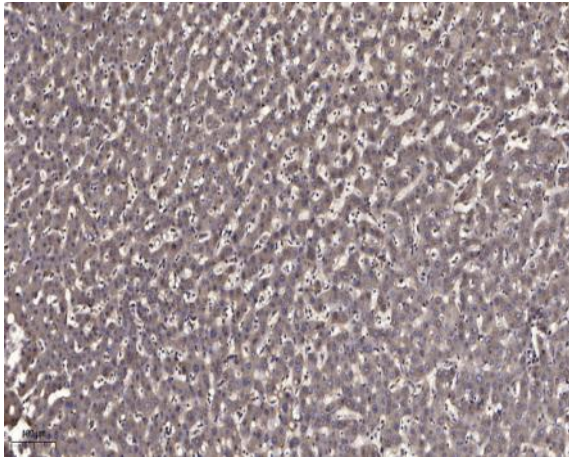
Catalog No :	YT6546
Reactivity :	Human;Mouse
Applications :	WB;IHC
Target :	KIF24
Gene Name :	KIF24 C9orf48
Protein Name :	KIF24
Human Gene Id :	347240
Human Swiss Prot No :	Q5T7B8
Mouse Gene Id :	109242
Mouse Swiss Prot No :	Q6NWW5
Immunogen :	Synthesized peptide derived from human KIF24 AA range: 1-51
Specificity :	This antibody detects endogenous levels of KIF24 at Human/Mouse
Formulation :	Liquid in PBS containing 50% glycerol, 0.5% BSA and 0.02% sodium azide.
Source :	Polyclonal, Rabbit,IgG
Dilution :	WB 1:500-2000;IHC 1:50-300
Purification :	The antibody was affinity-purified from rabbit antiserum by affinity-chromatography using epitope-specific immunogen.
Concentration :	1 mg/ml
Storage Stability :	-15°C to -25°C/1 year(Do not lower than -25°C)

Molecularweight : 150kD**Background :** Kinesins, such as KIF24, are microtubule-dependent ATPases that function as molecular motors. They play important roles in intracellular vesicle transport and cell division (summary by Venturelli et al., 2010 [PubMed 20670673]).[supplied by OMIM, Feb 2011],**Function :** similarity:Belongs to the kinesin-like protein family.,similarity:Contains 1 kinesin-motor domain.,similarity:Contains 1 SAM (sterile alpha motif) domain.,**Subcellular Location :** Cytoplasm, cytoskeleton, microtubule organizing center, centrosome, centriole . Cytoplasm, cytoskeleton, microtubule organizing center, centrosome . Primarily localizes to the mother centriole/basal body and is either absent at daughter centriole.**Sort :** 8915**No4 :** 1**Host :** Rabbit**Modifications :** Unmodified

Products Images



Western blot analysis of lysates from K562 cells, primary antibody was diluted at 1:1000, 4° over night



Immunohistochemical analysis of paraffin-embedded human liver cancer. 1, Antibody was diluted at 1:200(4° overnight). 2, Tris-EDTA,pH9.0 was used for antigen retrieval. 3,Secondary antibody was diluted at 1:200(room temperature, 45min).