

## HDGL1 rabbit pAb

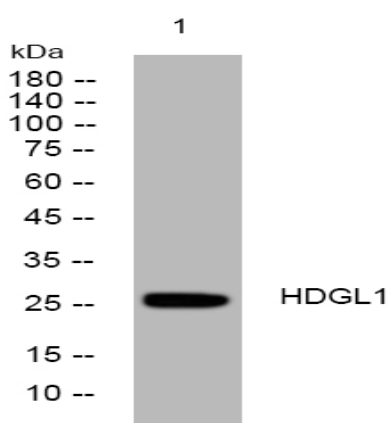
<b>Catalog No :</b>	YT6541
<b>Reactivity :</b>	Human
<b>Applications :</b>	WB
<b>Target :</b>	HDGL1
<b>Gene Name :</b>	HDGFL1 PWWP1
<b>Protein Name :</b>	HDGL1
<b>Human Gene Id :</b>	154150
<b>Human Swiss Prot No :</b>	Q5TGJ6
<b>Immunogen :</b>	Synthesized peptide derived from human HDGL1 AA range: 175-225
<b>Specificity :</b>	This antibody detects endogenous levels of HDGL1 at Human
<b>Formulation :</b>	Liquid in PBS containing 50% glycerol, 0.5% BSA and 0.02% sodium azide.
<b>Source :</b>	Polyclonal, Rabbit,IgG
<b>Dilution :</b>	WB 1:500-2000
<b>Purification :</b>	The antibody was affinity-purified from rabbit antiserum by affinity-chromatography using epitope-specific immunogen.
<b>Concentration :</b>	1 mg/ml
<b>Storage Stability :</b>	-15°C to -25°C/1 year(Do not lower than -25°C)
<b>Molecularweight :</b>	28kD
<b>Function :</b>	similarity:Belongs to the HDGF family.,similarity:Contains 1 PWWP domain.,

---

<b>Subcellular Location :</b>	extracellular space,nucleus,
<b>Sort :</b>	7306
<b>No4 :</b>	1
<b>Host :</b>	Rabbit
<b>Modifications :</b>	Unmodified

---

## Products Images



Western blot analysis of lysates from HpeG2 cells, primary antibody was diluted at 1:1000, 4° over night