

NIT2 rabbit pAb

Catalog No :	YT6539
Reactivity :	Human;Mouse;Rat
Applications :	WB
Target :	NIT2
Fields :	>>Alanine, aspartate and glutamate metabolism;>>Metabolic pathways
Gene Name :	NIT2 CUA002
Protein Name :	NIT2
Human Gene Id :	56954
Human Swiss Prot No :	Q9NQR4
Mouse Gene Id :	52633
Mouse Swiss Prot No :	Q9JHW2
Rat Gene Id :	288174
Rat Swiss Prot No :	Q497B0
Immunogen :	Synthesized peptide derived from human NIT2 AA range: 200-250
Specificity :	This antibody detects endogenous levels of NIT2 at Human/Mouse/Rat
Formulation :	Liquid in PBS containing 50% glycerol, 0.5% BSA and 0.02% sodium azide.
Source :	Polyclonal, Rabbit,IgG
Dilution :	WB 1[?]500-2000
Purification :	The antibody was affinity-purified from rabbit antiserum by affinity-

chromatography using epitope-specific immunogen.

Concentration : 1 mg/ml

Storage Stability : -15°C to -25°C/1 year(Do not lower than -25°C)

Molecularweight : 30kD

Function : function:Overexpression decreases the colony-forming capacity of cultured cells by arresting cells in the G2 phase of the cell cycle.,mass spectrometry: PubMed:17488281,similarity:Belongs to the UPF0012 family.,similarity:Contains 1 CN hydrolase domain.,tissue specificity:Detected in fetal brain (at protein level). Ubiquitous. Detected in heart, brain, placenta, lung, liver, skeletal muscle, kidney, pancreas, prostate, spleen, thymus, prostate, testis, ovary, small intestine and colon.,

Subcellular Location : Cytoplasm .

Expression : Detected in fetal brain (at protein level). Ubiquitous. Detected in heart, brain, placenta, lung, liver, skeletal muscle, kidney, pancreas, prostate, spleen, thymus, prostate, testis, ovary, small intestine and colon.

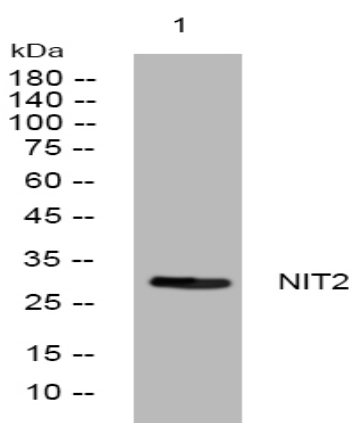
Sort : 10859

No4 : 1

Host : Rabbit

Modifications : Unmodified

Products Images



Western blot analysis of lysates from MCF-7 cells, primary antibody was diluted at 1:1000, 4° over night