

## MID51 rabbit pAb

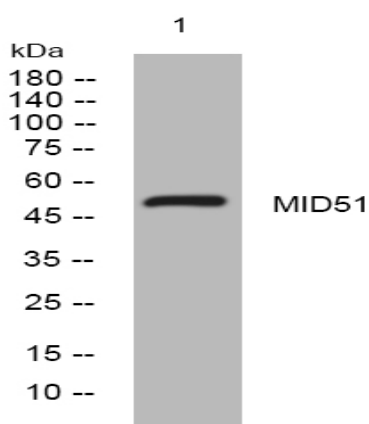
<b>Catalog No :</b>	YT6538
<b>Reactivity :</b>	Human;Mouse;Rat
<b>Applications :</b>	WB;ELISA;IHC
<b>Target :</b>	MID51
<b>Gene Name :</b>	SMCR7L MID51 MIEF1
<b>Protein Name :</b>	MID51
<b>Human Gene Id :</b>	54471
<b>Human Swiss Prot No :</b>	Q9NQG6
<b>Mouse Gene Id :</b>	239555
<b>Mouse Swiss Prot No :</b>	Q8BGV8
<b>Rat Gene Id :</b>	315141
<b>Rat Swiss Prot No :</b>	Q5XIS8
<b>Immunogen :</b>	Synthesized peptide derived from human MID51 AA range: 93-143
<b>Specificity :</b>	This antibody detects endogenous levels of MID51 at Human/Mouse/Rat
<b>Formulation :</b>	Liquid in PBS containing 50% glycerol, 0.5% BSA and 0.02% sodium azide.
<b>Source :</b>	Polyclonal, Rabbit,IgG
<b>Dilution :</b>	WB 1:500-2000;IHC 1:50-300; ELISA 2000-20000
<b>Purification :</b>	The antibody was affinity-purified from rabbit antiserum by affinity-chromatography using epitope-specific immunogen.

---

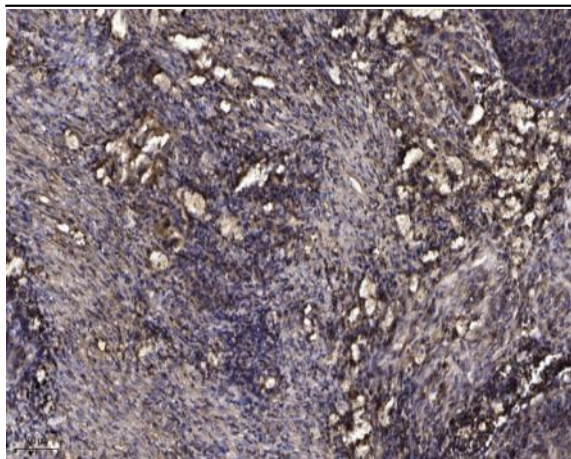
<b>Concentration :</b>	<u>1 mg/ml</u>
<b>Storage Stability :</b>	<u>-15°C to -25°C/1 year(Do not lower than -25°C)</u>
<b>Molecularweight :</b>	<u>51kD</u>
<b>Function :</b>	<u>similarity:Belongs to the SMCR7 family.,</u>
<b>Subcellular Location :</b>	<u>Mitochondrion outer membrane ; Single-pass membrane protein .</u>
<b>Expression :</b>	<u>Expression is relatively high in heart, skeletal muscle, pancreas and kidney.</u>
<b>Sort :</b>	<u>9640</u>
<b>No4 :</b>	<u>1</u>
<b>Host :</b>	<u>Rabbit</u>
<b>Modifications :</b>	<u>Unmodified</u>

---

## Products Images



Western blot analysis of lysates from U2OS cells, primary antibody was diluted at 1:1000, 4° over night



Immunohistochemical analysis of paraffin-embedded human Squamous cell carcinoma of lung. 1, Antibody was diluted at 1:200(4° overnight). 2, Tris-EDTA,pH9.0 was used for antigen retrieval. 3,Secondary antibody was diluted at 1:200(room temperature, 45min).