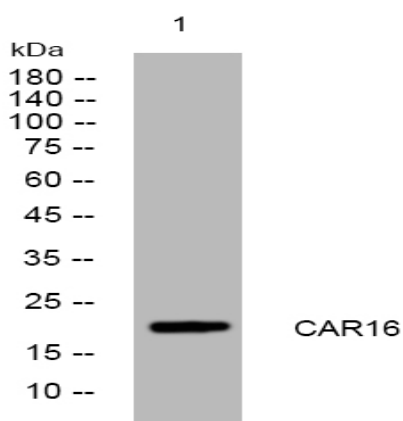


CAR16 rabbit pAb

Catalog No :	YT6533
Reactivity :	Human
Applications :	WB
Target :	CAR16
Fields :	>>NOD-like receptor signaling pathway
Gene Name :	CARD16 COP COP1
Protein Name :	CAR16
Human Gene Id :	114769
Human Swiss Prot No :	Q5EG05
Immunogen :	Synthesized peptide derived from human CAR16 AA range: 101-151
Specificity :	This antibody detects endogenous levels of CAR16 at Human
Formulation :	Liquid in PBS containing 50% glycerol, 0.5% BSA and 0.02% sodium azide.
Source :	Polyclonal, Rabbit,IgG
Dilution :	WB 1[?]500-2000
Purification :	The antibody was affinity-purified from rabbit antiserum by affinity-chromatography using epitope-specific immunogen.
Concentration :	1 mg/ml
Storage Stability :	-15°C to -25°C/1 year(Do not lower than -25°C)
Molecularweight :	22kD

Function :	function:Caspase inhibitor. Acts as a regulator of procaspase-1/CASP1 activation implicated in the regulation of the proteolytic maturation of pro-interleukin-1 beta (IL1B) and its release during inflammation. Inhibits the release of IL1B in response to LPS in monocytes. Also induces NF-kappa-B activation during the pro-inflammatory cytokine response. Also able to inhibit CASP1-mediated neuronal cell death, TNF-alpha, hypoxia-, UV-, and staurosporine-mediated cell death but not ER stress-mediated cell death. Acts by preventing activation of caspases CASP1 and CASP4, possibly by preventing the interaction between CASP1 and RIPK2.,induction:Down-regulated in patients suffering of Huntington disease.,similarity:Contains 1 CARD domain.,subunit:Homooligomer. Interacts with CASP1, CASP4, CARD8 and RIPK2.,tissue specificity:Widely expressed. Expressed at higher level in placenta, spleen, lymph
Expression :	Widely expressed. Expressed at higher level in placenta, spleen, lymph node and bone marrow. Weakly or not expressed in thymus.
Sort :	3111
No4 :	1
Host :	Rabbit
Modifications :	Unmodified

Products Images



Western blot analysis of lysates from HeLa cells, primary antibody was diluted at 1:1000, 4° over night