

## RN112 rabbit pAb

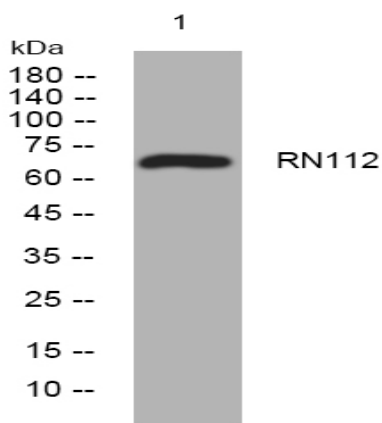
<b>Catalog No :</b>	YT6529
<b>Reactivity :</b>	Human;Mouse;Rat
<b>Applications :</b>	WB;IHC
<b>Target :</b>	RN112
<b>Gene Name :</b>	RNF112 BFP ZNF179
<b>Protein Name :</b>	RN112
<b>Human Gene Id :</b>	7732
<b>Human Swiss Prot No :</b>	Q9ULX5
<b>Mouse Gene Id :</b>	22671
<b>Mouse Swiss Prot No :</b>	Q96DY5
<b>Rat Gene Id :</b>	24916
<b>Rat Swiss Prot No :</b>	O70418
<b>Immunogen :</b>	Synthesized peptide derived from human RN112 AA range: 377-427
<b>Specificity :</b>	This antibody detects endogenous levels of RN112 at Human/Mouse/Rat
<b>Formulation :</b>	Liquid in PBS containing 50% glycerol, 0.5% BSA and 0.02% sodium azide.
<b>Source :</b>	Polyclonal, Rabbit,IgG
<b>Dilution :</b>	WB 1:500-2000;IHC 1:50-300
<b>Purification :</b>	The antibody was affinity-purified from rabbit antiserum by affinity-chromatography using epitope-specific immunogen.

---

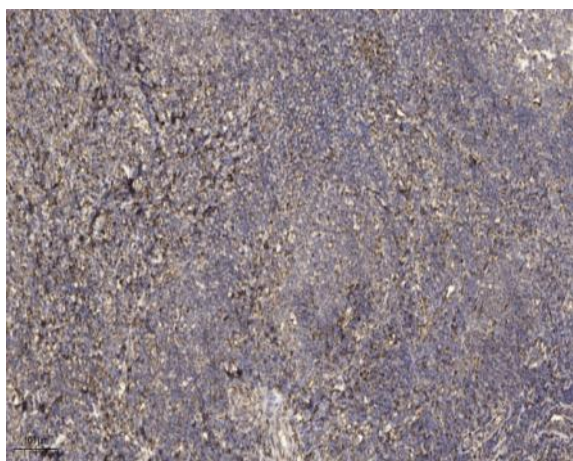
<b>Concentration :</b>	1 mg/ml
<b>Storage Stability :</b>	-15°C to -25°C/1 year(Do not lower than -25°C)
<b>Molecularweight :</b>	69kD
<b>Background :</b>	This gene encodes a member of the RING finger protein family of transcription factors. The protein is primarily expressed in brain. The gene is located within the Smith-Magenis syndrome region on chromosome 17. [provided by RefSeq, Jul 2008],
<b>Function :</b>	similarity:Contains 1 RING-type zinc finger.,tissue specificity:Predominantly expressed in brain.,
<b>Subcellular Location :</b>	Membrane ; Multi-pass membrane protein . Membrane ; Peripheral membrane protein . Cytoplasm . Nucleus . Nucleus, nuclear body . Nucleus, nucleoplasm . Endosome . Cytoplasmic vesicle, secretory vesicle, synaptic vesicle . Cell junction, synapse, postsynaptic density . Perikaryon . Cell projection, neuron projection . Predominantly in the nucleus, but some amounts were also found in the cytoplasm. Oxidative stress stimulates its shuttling from the cytoplasm into the nucleus. Recruited to nuclear bodies via its interaction with ZBTB16. Localizes to the cell soma and neuritis and only slightly to the nucleus in the neurons of most brain areas. .
<b>Expression :</b>	Predominantly expressed in brain (PubMed:10574464). Decreased expression in glioma brain tumors as compared to normal brains (at protein level) (PubMed:28684796).
<b>Sort :</b>	14543
<b>No4 :</b>	1
<b>Host :</b>	Rabbit
<b>Modifications :</b>	Unmodified

---

## Products Images



Western blot analysis of lysates from K562 cells, primary antibody was diluted at 1:1000, 4° over night



Immunohistochemical analysis of paraffin-embedded human tonsil. 1, Antibody was diluted at 1:200(4° overnight). 2, Tris-EDTA,pH9.0 was used for antigen retrieval. 3,Secondary antibody was diluted at 1:200(room temperature, 45min).