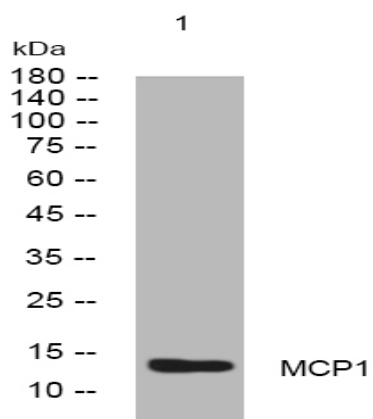


MCP1 rabbit pAb

Catalog No :	YT6526
Reactivity :	Human;Mouse;
Applications :	WB
Target :	MCP1
Gene Name :	MCP1, SCYA2,CCL2
Protein Name :	MCP1;Monocyte chemoattractant protein 1;Monocyte chemotactic protein 1;Monocyte secretory protein JE
Human Swiss Prot No :	P13500
Mouse Gene Id :	P10148
Immunogen :	Synthesized peptide derived from human MCP1. AA 50-64
Specificity :	This antibody detects endogenous levels of MCP1 at Human
Formulation :	Liquid in PBS containing 50% glycerol, 0.5% BSA and 0.02% sodium azide.
Source :	Polyclonal, Rabbit,IgG
Dilution :	WB 1:500-2000
Purification :	The antibody was affinity-purified from rabbit antiserum by affinity-chromatography using epitope-specific immunogen.
Concentration :	1 mg/ml
Storage Stability :	-15°C to -25°C/1 year(Do not lower than -25°C)
Molecularweight :	15kD
Sort :	1

No4 :	<u>1</u>
Host :	<u>Rabbit</u>
Modifications :	<u>Unmodified</u>

Products Images



Western blot analysis of lysates from HeLa cells, primary antibody was diluted at 1:1000, 4° over night