

## KISHB rabbit pAb

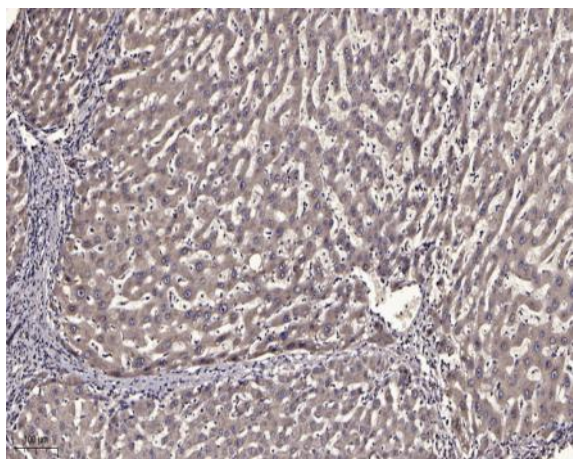
<b>Catalog No :</b>	YT6525
<b>Reactivity :</b>	Human;Mouse
<b>Applications :</b>	IHC;IF
<b>Target :</b>	KISHB
<b>Gene Name :</b>	TMEM167B C1orf119 AD-020
<b>Protein Name :</b>	KISHB
<b>Human Gene Id :</b>	56900
<b>Human Swiss Prot No :</b>	Q9NRX6
<b>Mouse Gene Id :</b>	67495
<b>Mouse Swiss Prot No :</b>	Q80X45
<b>Immunogen :</b>	Synthesized peptide derived from human KISHB AA range: 14-64
<b>Specificity :</b>	This antibody detects endogenous levels of KISHB at Human/Mouse
<b>Formulation :</b>	Liquid in PBS containing 50% glycerol, 0.5% BSA and 0.02% sodium azide.
<b>Source :</b>	Polyclonal, Rabbit,IgG
<b>Dilution :</b>	IHC 1:50-200. IF 1:50-200
<b>Purification :</b>	The antibody was affinity-purified from rabbit antiserum by affinity-chromatography using epitope-specific immunogen.
<b>Concentration :</b>	1 mg/ml
<b>Storage Stability :</b>	-15°C to -25°C/1 year(Do not lower than -25°C)

---

<b>Molecularweight :</b>	8kD
<b>Function :</b>	caution:The sequence shown here is derived from an Ensembl automatic analysis pipeline and should be considered as preliminary data.,similarity:Belongs to the UPF0373 family.,
<b>Subcellular Location :</b>	Golgi apparatus membrane ; Single-pass type I membrane protein .
<b>Sort :</b>	8935
<b>No4 :</b>	1
<b>Host :</b>	Rabbit
<b>Modifications :</b>	Unmodified

---

## Products Images



Immunohistochemical analysis of paraffin-embedded human liver cancer. 1, Antibody was diluted at 1:200(4° overnight). 2, Tris-EDTA,pH9.0 was used for antigen retrieval. 3,Secondary antibody was diluted at 1:200(room temperature, 45min).