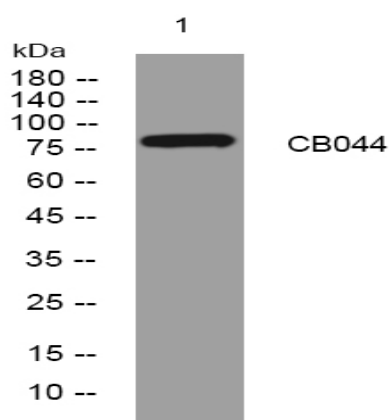


CB044 rabbit pAb

Catalog No :	YT6520
Reactivity :	Human;Mouse
Applications :	WB
Target :	CB044
Gene Name :	C2orf44 PP384
Protein Name :	CB044
Human Gene Id :	80304
Human Swiss Prot No :	Q9H6R7
Mouse Gene Id :	238037
Mouse Swiss Prot No :	Q6NV72
Immunogen :	Synthesized peptide derived from human CB044 AA range: 213-263
Specificity :	This antibody detects endogenous levels of CB044 at Human/Mouse
Formulation :	Liquid in PBS containing 50% glycerol, 0.5% BSA and 0.02% sodium azide.
Source :	Polyclonal, Rabbit,IgG
Dilution :	WB 1[?]500-2000
Purification :	The antibody was affinity-purified from rabbit antiserum by affinity-chromatography using epitope-specific immunogen.
Concentration :	1 mg/ml
Storage Stability :	-15°C to -25°C/1 year(Do not lower than -25°C)

Molecularweight :	<u>79kD</u>
Function :	<u>similarity:Contains 2 WD repeats.,</u>
Sort :	<u>3257</u>
No4 :	<u>1</u>
Host :	<u>Rabbit</u>
Modifications :	<u>Unmodified</u>

Products Images



Western blot analysis of lysates from A549 cells, primary antibody was diluted at 1:1000, 4° over night