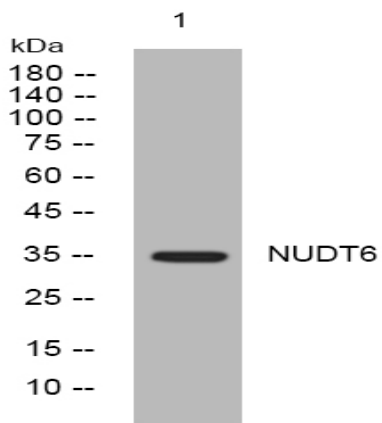


NUDT6 rabbit pAb

Catalog No :	YT6515
Reactivity :	Human;Mouse;Rat
Applications :	WB
Target :	NUDT6
Gene Name :	NUDT6 FGF2AS
Protein Name :	NUDT6
Human Gene Id :	11162
Human Swiss Prot No :	P53370
Mouse Gene Id :	229228
Mouse Swiss Prot No :	Q8CH40
Rat Gene Id :	207120
Rat Swiss Prot No :	P70563
Immunogen :	Synthesized peptide derived from human NUDT6 AA range: 225-275
Specificity :	This antibody detects endogenous levels of NUDT6 at Human/Mouse/Rat
Formulation :	Liquid in PBS containing 50% glycerol, 0.5% BSA and 0.02% sodium azide.
Source :	Polyclonal, Rabbit,IgG
Dilution :	WB 1:500-2000
Purification :	The antibody was affinity-purified from rabbit antiserum by affinity-chromatography using epitope-specific immunogen.

Concentration :	1 mg/ml
Storage Stability :	-15°C to -25°C/1 year(Do not lower than -25°C)
Molecularweight :	35kD
Background :	This gene overlaps and lies on the opposite strand from FGF2 gene, and is thought to be the FGF2 antisense gene. The two genes are independently transcribed, and their expression shows an inverse relationship, suggesting that this antisense transcript may regulate FGF2 expression. This gene has also been shown to have hormone-regulatory and antiproliferative actions in the pituitary that are independent of FGF2 expression. Alternatively spliced transcript variants encoding different isoforms have been found for this gene. [provided by RefSeq, Oct 2011],
Function :	miscellaneous:This protein is coded from a FGF2 (BFGF) gene antisense transcript.,similarity:Belongs to the Nudix hydrolase family.,
Subcellular Location :	Cytoplasm. Nucleus. Mitochondrion. Subcellular location may vary between isoforms.
Expression :	Detected in liver, kidney and esophagus (at protein level). Ubiquitous.
Sort :	10999
No4 :	1
Host :	Rabbit
Modifications :	Unmodified

Products Images



Western blot analysis of lysates from KB cells, primary antibody was diluted at 1:1000, 4° over night